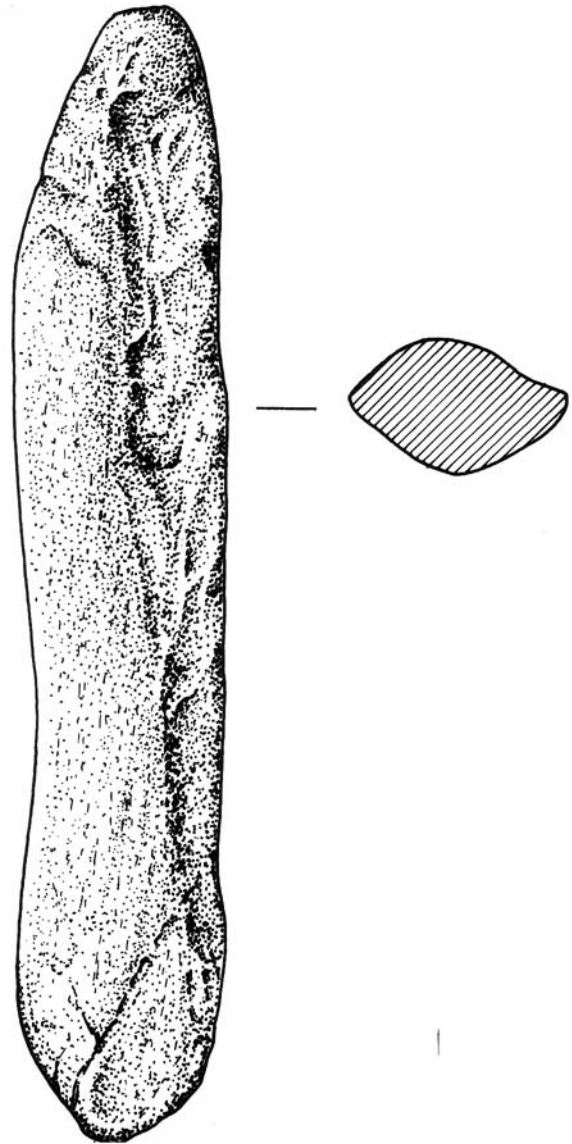


## 7 Coarse stone tools by A Clarke

Seven archaeological pieces of coarse stone were recovered from the excavations (Table 29). Four are flakes, originally catalogued among the other flaked lithics, but probably relating to the breakage of hammerstones and other cobble tools.

One is a bevelled pebble (B111; Illus 38). This is a type found on other Mesolithic sites, for example Kinloch, Rùm (Clarke 1990), but the Camas Daraich bevelled pebble is lightly worn so that it bears only passing resemblance to similar tools. This is the only piece to come from a secure Mesolithic context.

The other two items are both fragments of beach cobbles. One (B101) has some indications of usewear, probably as a simple hammerstone. B103 has evidence of spalling through heat, suggesting that it was used as a 'pot boiler'.



Illus 38 Camas Daraich: the bevelled pebble, B111

Table 29 Catalogue of coarse stone  
(measurements given in mm; very fragmentary pieces not measured)

Bag no	Location	Context	Raw material	Description	Size (mm)
111	Tr 1: B3 SE	08	Long finger-like pebble of schist	Light wear traces on either end from light pecking or grinding. Lightly used bevelled pebble	15×29×7
101	Tr1: C1 NW	05	Fragment of a sandstone cobble	Heavy irregular flaking from the cortical face, possibly due to use as a hammerstone	
103	Tr1: C1 NW	05	Large fragment of a fine-grained metamorphic cobble	Much of the cortex has been removed by flaking which appears to be natural, probably due to heat. Pot boiler	
221	Tr1: NW	03	Coarse stone flake		5×42×14
36	Tr1: B1	04	Coarse stone flake		23×19×15
25	Tr1: NE	07	Coarse stone flake		77×26×10
20	Tr1: C1 SW	05	Coarse stone flake		45×21×10