
7 Small finds *by Andrew Dunn*

A total of 48 small finds is presented here, including a representative illustration of the window comes. The majority derives from either the fill of the great drain or the accompanying midden deposits. As such, the small finds can provide dating evidence and other information relating to the formation of the midden and the filling of the drain. The finds are presented below in catalogue form, according to material type.

7.1 Metal objects

A silver spoon (no 1) was recovered from a late rubble deposit. In Emery's (1976) classification this is a 'ficulate' type, with a date range in England from the end of the Hundred Years' War to the Restoration (see [Emery 1976](#), fig 33.ii, for the closest parallel). The style, thought to originate in Italy, where early ficulate spoons are dated to the 14th and 15th centuries, was later adopted in France and England. Like the Dundrennan example, spoons of this type were often too big to be inserted wholly into the mouth and would probably have been soup-spoons, rather than, say, used in a liturgical context (as might have been the case in an early medieval monastic context). A 16th-century date for the spoon is not unreasonable. The form and decoration marks the spoon as a local variant, being quite unlike most examples found elsewhere in Europe.

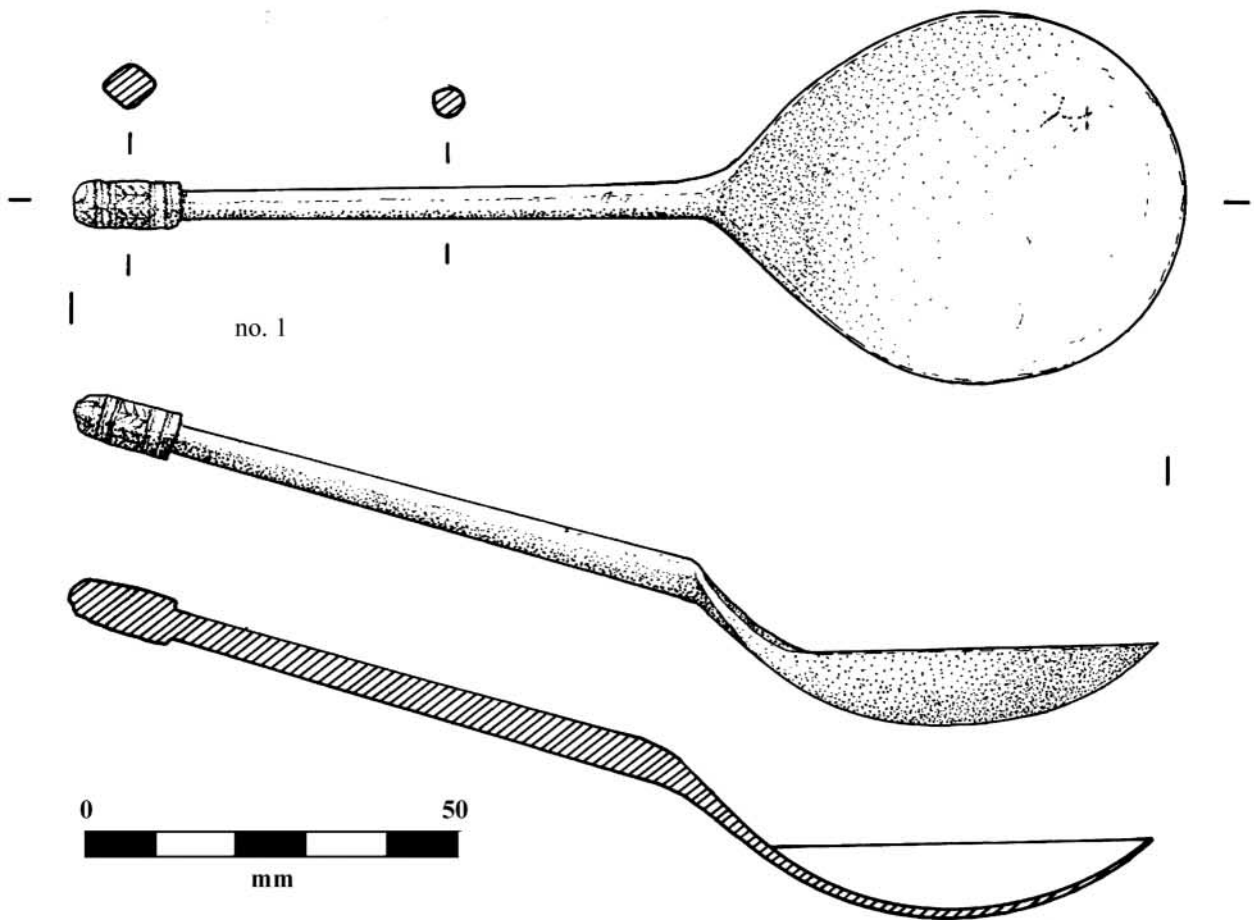
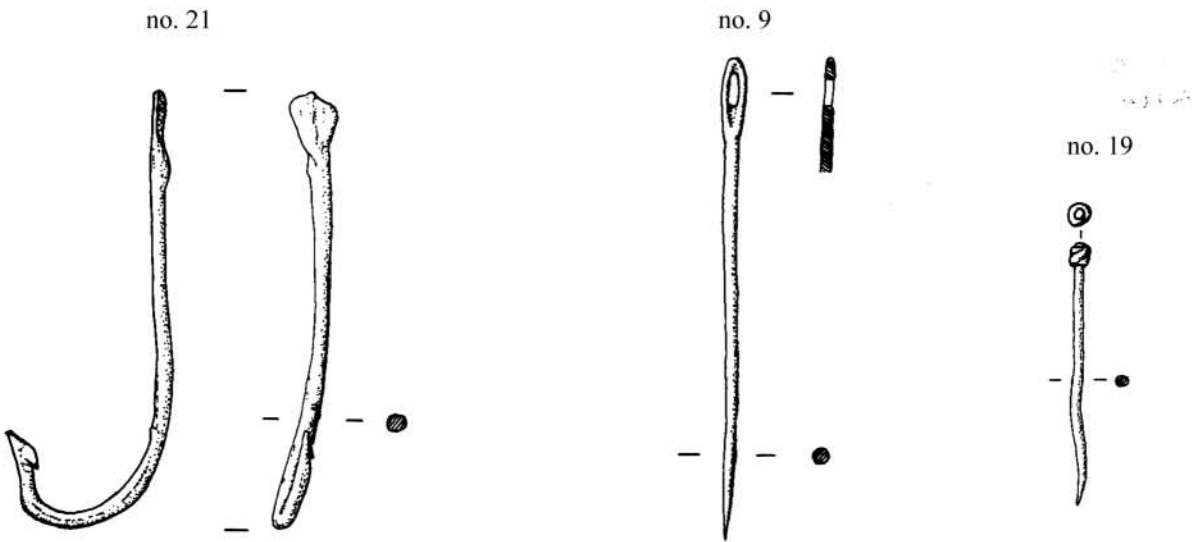
Several pins were recovered, both in silver and in copper alloy. The introduction of (brass) wire pins to Britain dates to 1543 ([Tylecote 1972](#)), and the fashion of forming a globular head by means of two or more twists at the head dates to the same period. The tradition continued until the end of the 18th century, but the Dundrennan pins should be placed earlier in this range, as they have fewer twists in the globular head. A late 16th-century date is appropriate, although pins of this type continued in use for at least 150 years.

XRF analysis of the ingot (no. 17) was undertaken at AOC Archaeology Ltd and the National Museums of Scotland. This revealed it to be of a copper and lead compound composition. The object may be the waste product of silver refining, although whether this was carried out on site is not known.

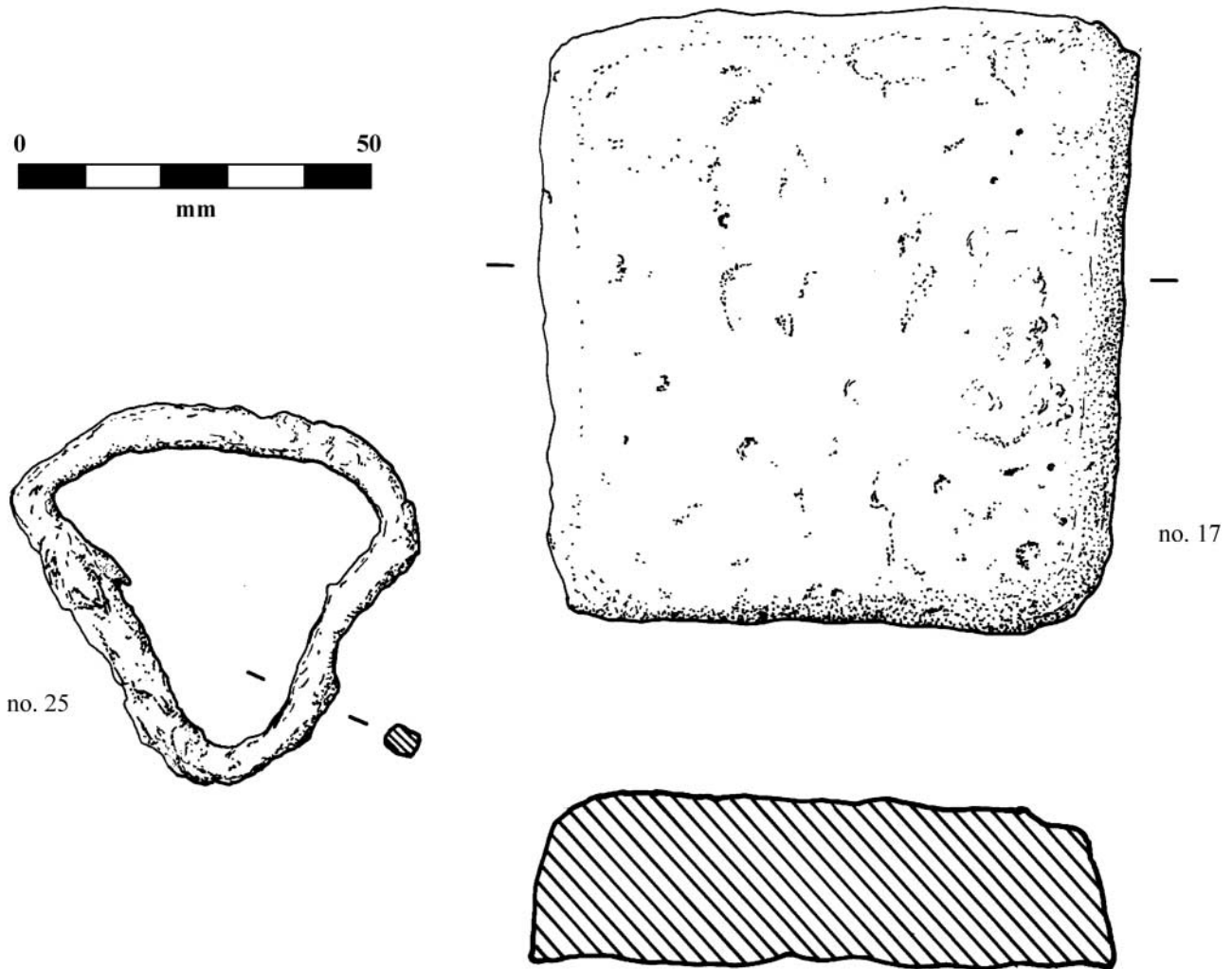
In addition to the objects described below, quantities of lead window came were also recovered (eg [illus 38](#), no 40).

7.1.1 Catalogue of metal objects

1. *Spoon* ([illus 35](#)) A large silver spoon, measuring 145 mm in length, with a large bowl and an 85 mm handle, tapering to a lozenge-sectioned terminus (knop). The knop is decorated on all four sides, and on the end with a cross. Context 012, rubble deposit, Period V.
2. *Pin* Silver pin measuring 35 mm in length, with wire-wound head. 3 mm in section. Context 043, hearth in room 8, Period I (the pin is of a later date and likely to be intrusive in this context).
3. *Key* ([illus 37](#)) Iron key, badly corroded, measuring 85 mm in length and with circular end. Context 141, from surface of unexcavated deposit in south-east corner of room 4, Period unknown.
4. *Pin* Silver pin with wire-wound headed, head slightly flattened. Measures 35 mm. Context 129, upper midden deposit, Period IV.
5. *Pin* Silver pin with wire-wound head. 23 mm in length. Context 129, upper midden deposit, Period IV.
6. *Pin* Silver pin with slightly flattened head, very fine in section, *c* 20 mm in length. Context 191, upper midden deposit, Period IV–V.
7. *Coin* Francis & Mary hardhead/Lion, type II, minted 1559–60, countermarked with heart and star when recalled under James VI in 1575. Probably lost soon after 1575. Context 174, upper midden deposit, Period IV–V.
8. *Lace tag* Copper-alloy lace tag, 25 mm in length, formed from a single piece of copper alloy, wrapped around to form a hollow cylinder. Traces of leather within. Context 183, upper midden deposit, Period IV.
9. *Needle* ([illus 35](#)) Copper-alloy needle, 63 mm long, with ovoid eyehole, and tapering to a point. Head slightly flattened. Context 193, upper midden deposit, Period IV.
10. *Heel* Iron heel support, horseshoe-shaped with three spikes to attach to the heel; *c* 40 mm by 40 mm, and 2–3 mm thick. Context 200, bracing within the latrine shaft, Period IV.
11. *Pin* Fragment of copper-alloy pin, 13 mm in length. Context 184, upper midden deposit, Period IV.
12. *Lace tag* Copper-alloy lace tag, formed in same manner as no. 8, measuring 20 mm in length. Context 129, upper midden deposit, Period IV.
13. *Pin* Copper-alloy/silver pin, wire-wound head, length 52 mm. Context 196, lower midden deposit, Period IV.
14. *Pin* Copper-alloy/silver pin, wire-wound head, length 35 mm. Context 196, lower midden deposit, Period IV.
15. *Pin* Copper-alloy/silver pin, head missing, length 36 mm. Context 196, lower midden deposit, Period IV.
16. *Lace tags* Five copper-alloy lace tags; four are 15

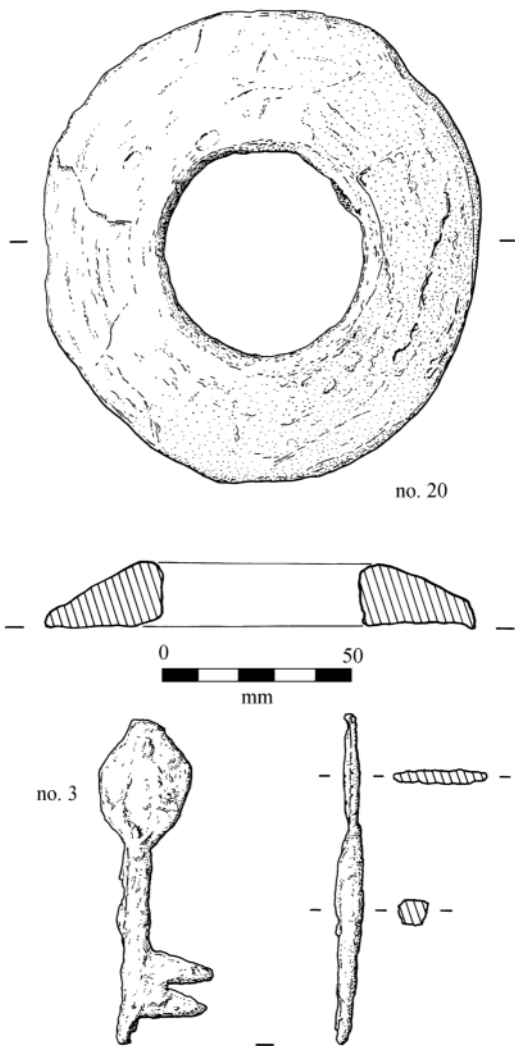


Illus 35 Silver spoon; copper-alloy fish-hook, needle & pin



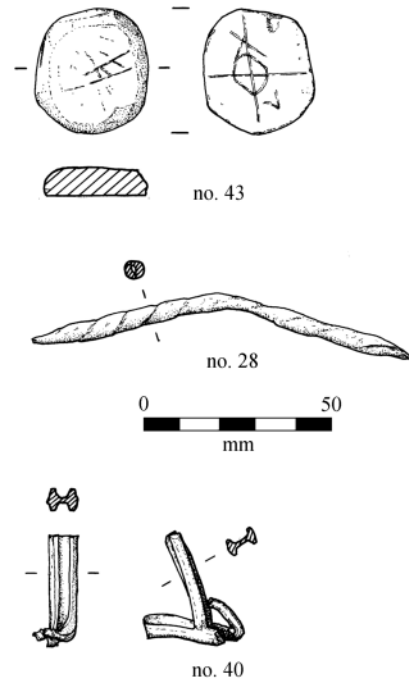
Illus 36 Compound ingot and iron belt loop

- mm long, one is 11 mm. Two contain traces of leather lace. Context 198, lower midden deposit, Period IV.
17. *Ingot (illus 36)* Copper-alloy ingot, square in plan and 18 mm thick, sides measuring 80 mm. Irregular corroded surfaces with no trace of markings. Weight c 945 g. Context 198, basal drain fill, Period IV.
 18. *Lace tags* Three copper-alloy lace tags, measuring 21 mm, 15 mm and 16 mm. Two retain traces of leather. Context 222, debris from insertion of drain caps, Period IV.
 19. *Pin (illus 35)* Copper-alloy pin with wire-wound head, 33 mm long. Context 171, drain in floor, room 5, Period IV–V.
 20. *Ring/quoit (illus 37)* Large iron ring, 123 mm by 110 mm with a hole of 53 mm diameter. Flat base with sloping sides. Possibly part of a wheel fitting. Unstratified.
 21. *Fish hook (illus 35)* Copper-alloy fish hook, 70 mm long. Single barbed tip and splayed opposite end. Not unlike some published English examples (eg illustrated in [Steane & Foreman 1988](#)), a common form of hook throughout the medieval period. Unstratified.
 22. *Iron object* Four conjoining plate fragments, with a possible rivet at one end. Context 227, floor of room 5, beneath collapsed vault, Period II.
 23. *Ring/ring brooch* Plain circular ring of copper alloy, possibly part of a ring brooch (no pin was present), 20 mm in diameter. Context 231, latest occupation deposit room 4, Period V.
 24. *Spearhead* Socketed iron spearhead, originally lozenge shaped in section. 130 mm long and 30 mm wide at the base. Context 278, levelling over collapsed vaulting, Period IV.
 25. *Belt loop (illus 36)* Iron belt loop, triangle-shaped, pinched in on two sides. Max 55 mm across. Context 279, late occupation or midden deposits over collapsed vaulting in room 5, Period IV.
 26. *Plaque* Small, roughly square piece of copper alloy, 15 mm by 15 mm, with slight protrusions on one side. Context 279, late occupation or midden deposits over collapsed vaulting in room 5, Period IV.



Illus 37 Iron quoit and key

27. *Handle?* Iron handle. Length 140 mm, bent at end, with two holes to attach a handle. Context 256, rubble within drain fill, Period IV.
28. *Scriptum?* (*illus 38*) Lead object, pointed at both ends, c 104 mm long. Possible scriptum or stylus. Context 253, silting in drain, Period IV.
29. *Bead* Copper-alloy bead. Small, sub-spherical bead, 6 mm across. Context 049, levelling material beneath floor in room 9, Period II.
30. *Pin* Copper-alloy/silver pin with wire-wound head, 32 mm long. Context 246, wall core and masonry collapse in room 5, possibly Period III.
31. *Lace tag* Copper-alloy lace tag, 15 mm long. Context 246, wall core and masonry collapse in room 5, possibly Period III.
32. *Plaque* Lead plaque, flat, with edges slightly raised, 32 mm by 27 mm and 3 mm thick. Context 267, basal drain fill, Period I.
33. *Seal* Lead seal, circular, with illegible relief markings; 19 mm in diameter. Context 223, bedding material for capstones, Period I.
34. *Lace tag* Copper-alloy lace tag, 12 mm long. Context 127, midden deposit, Period IV.



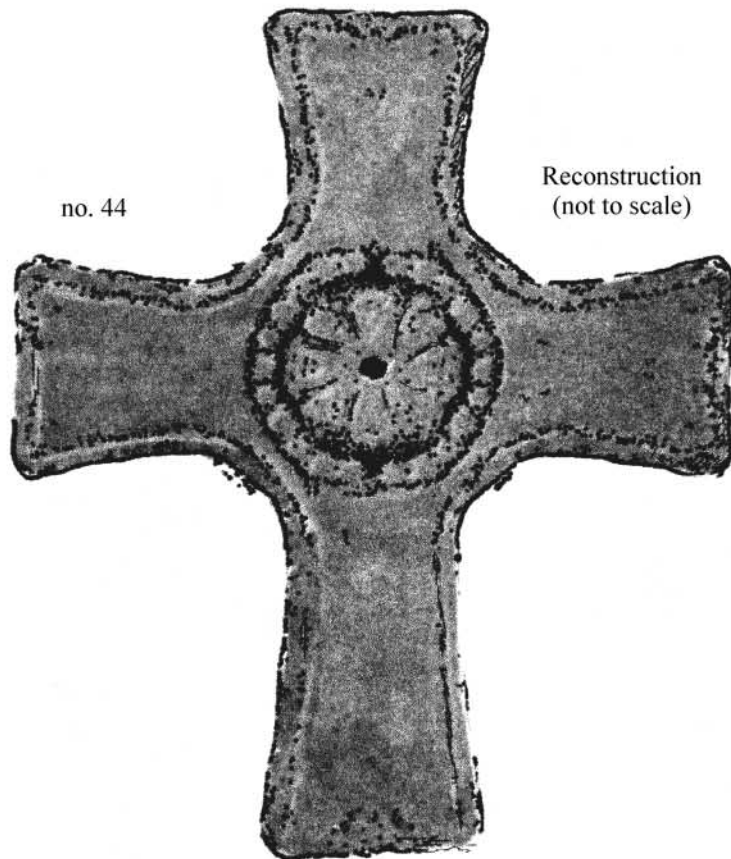
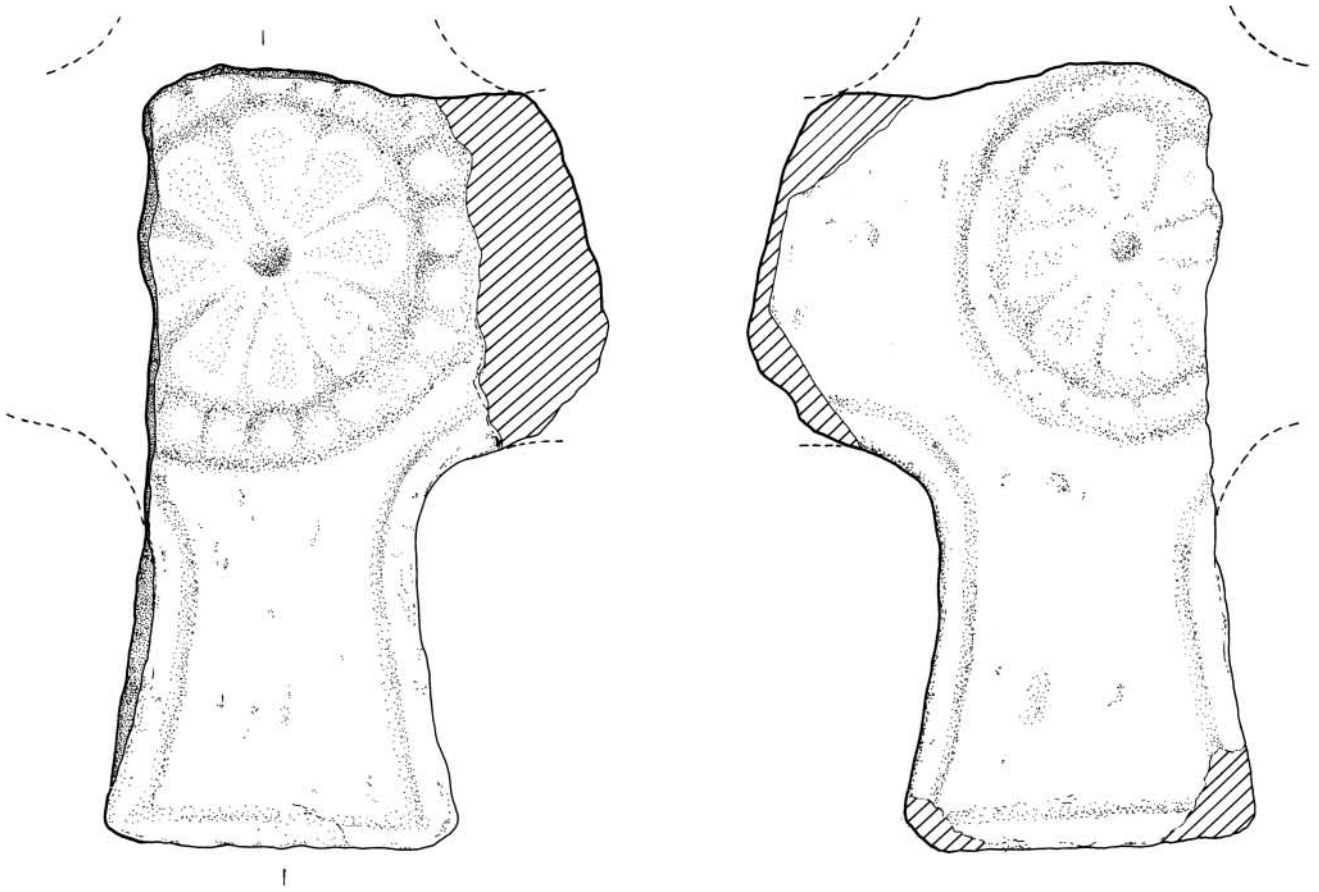
Illus 38 Stone counter, lead stylus and window comes

35. *Hinge* Copper hinge, with two nail holes on the flat side; 15 mm by 11 mm. Possibly modern. Context 279, late occupation or midden deposits over collapsed vaulting in room 5, Period IV.
36. *Lace tag* Copper-alloy lace tag, 17 mm long. Context 198, midden deposit, Period IV.
37. *Lace tag* Copper-alloy lace tag, 15 mm long. Context 196, midden deposit, Period IV.
38. *Coin* James IV billon penny, minted c1500–10, second issue, type II; lost before 1525. Context 193, midden deposit, Period IV.
39. *Pin* Copper-alloy pin with head hammered flat, 32 mm long. Context 184, upper midden deposit, Period IV.
40. *Comes* (*illus 38*) Two lead window comes with H-profile. Context 196, lower midden deposit, Period IV.

7.2 Other small finds

7.2.1 Leather (*not illus*)

41. *Shoe* Five fragments from a leather shoe, including two rows of riveted eyeholes, one nailed heel, one length of copper alloy, and one unidentifiable piece of leather. The eyeholes number 10 and 9 respectively, with the rivets themselves being 5–6 mm in size. The heel fragment measures c 50 mm by 60 mm, and includes 23 copper-alloy nails. Traces of stitching also visible within the heel. Context 153, backfill of trench around drain, Period V.



Illus 39 Stone cross

7.2.3 Stone

42. *Glazed pebble* Oval pebble with one flattened edge, measuring 17 mm by 12 mm. Banded appearance, traces of glaze. Possibly a gaming piece. Context 212, collapse from room 5, Period V.
43. *Counter* (illus 38) Roughly circular stone counter, decorated with a cross and circle on one side and crudely scored on the other. Width 30–35 mm, thickness 7 mm. Context 161, cross-wall within drain channel, Period II.
44. *Cross head* (illus 39) Approximately a third of this carved stone survives, featuring part of an arm and decoration at the crossing (the remainder was probably broken off in antiquity). Eight lobes or ‘petals’ (these are not compass drawn) radiate from a central circle and, in turn, are surrounded by a series of relief bosses forming an encircling ring 210 mm in diameter. Possible traces of

grooving define the side arms of the cross. 420 mm long and 230 mm wide max, up to 90 mm thick. Context 154, infill in room 5, Period V.

45. *Counter* Rounded slate counter, 40 mm diameter, 4 mm thick. No decoration. Context 137, midden deposit, Period V.

7.2.4 Vessel glass (not illus)

46. *Rim sherd* Fragment from rim of a fine decorated vessel, with two bands of painted stripes. Context 209, basal drain fill, Period IV.
47. *Rim sherd* Similar sherd to no 46, probably from the same vessel. Context 209, basal drain fill, Period IV.
48. *Sherd* Vessel glass sherd similar to nos. 47 & 48. Context 161, cross-wall within drain channel, Period II.