

APPENDIX 9 LEATHER

Clare Thomas & Antonia Craster

A full report on the leather and catalogue is contained in the site archive to be deposited in the National Record of the Historic Environment of Scotland. The leather consisted of 35 items, comprising parts of shoes and clothing, as well as a belt, two decorated items, offcuts and scraps. The material was all very fragmentary and worn. It most probably represented domestic waste; there was no evidence for shoe manufacture or repair. The shoes suggest that the assemblage was of late medieval date, possibly early 16th century. It was generally not possible to identify animal species.

**A.9.1 Shoes**

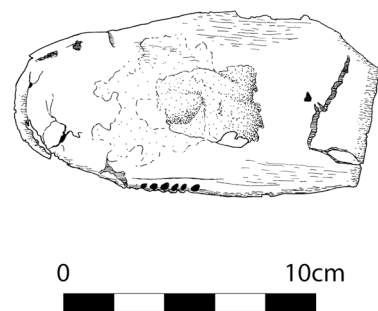
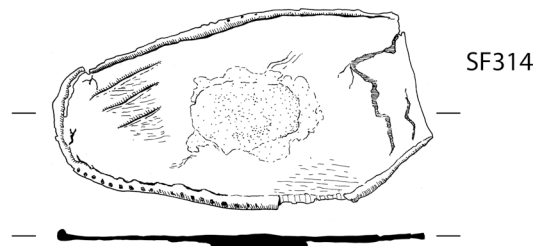
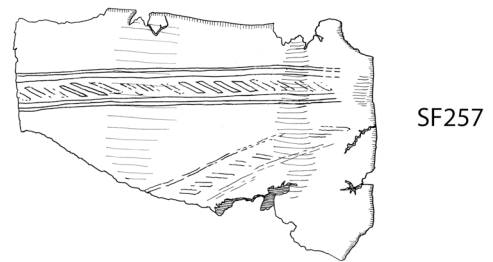
Shoes were represented by eight items from medieval cobble surfaces (Contexts 376, 416 and 442) and intervening deposits: two sole fragments (Illus 31); two heel-lifts and four upper parts. Weltd construction, but an early variant, was suggested by both the long stitch length and the style of a sole forepart (SF314). The presence of heel-lifts or top-pieces also suggests that this footwear was post-medieval in date. The upper fragments included two latches, fastened to each other with a buckle, the pin of which survived; the method of attachment to the shoe again indicated a late medieval date.

**A.9.2 Clothing**

Two fragments with lace holes recovered from medieval cobble surface Context 416 were most probably part of a garment such as a jerkin; they also feature slots for thongs, which might have been for adjustment of the fit. Unfortunately, there is no evidence to indicate date.

**A.9.3 Belt**

A strip of leather with long cut edges and remains of three holes for the pin of a buckle was a belt, either for clothing or for some other item, such as horse tack, and was recovered from the upper medieval cobble layer, Context 442.



**Illus 31** Seat of sole, SF255, Context 416; decorated fragment with three cut edges, SF257, Context 417; forepart of left sole (upper and lower surfaces), SF314, Context 442 (© AOC Archaeology Group)

#### **A.9.4 Decorated fragment**

A fragment (SF257) with three cut edges, with traces of hem stitch, was decorated with two converging bands of impressed diagonal lines (Illus 31). The regularity and shallowness of these lines suggested that they may have been machine cut, indicating a date in the 19th century or later, though it was recovered from Context 417, between medieval cobble layers.

#### **A.9.5 Conclusion**

This small assemblage was distinguished by the upper latches with remains of a buckle and by the clothing pieces. The shoe fragments suggest a date in the 16th century or later; the decorated fragment may be of 19th-century date.