

FICHE 4: CONTENTS

- M K GREIG & C GREIG Remains of a 12th-century structure and other medieval features on the Knoll of Castle Point, Troup (Cullykhan), Banff and Buchan A3-D5
- I A G SHEPHERD & A N SHEPHERD A grain storage pit of the pre-improvement period at Inchkeil, Duffus, Moray E1-9

*Proc Soc Antiq Scot*, 119 (1989), fiche 4:A3-D5

REMAINS OF A 12TH-CENTURY STRUCTURE AND OTHER MEDIEVAL  
FEATURES ON THE KNOLL OF CASTLE POINT, TROUP (CULLYKHAN),  
BANFF AND BUCHAN

MOIRA KENNEDY GREIG AND COLVIN GREIG

CONTENTS

Feature descriptions	4: A5
Knoll sections	4: A7
List of 12/13th-century postholes	4: A9
Mineralogical report Ian Basham	4: B3
Pottery catalogue J C Murray & M K Greig	4: B4
Metalwork catalogue R M Spearman	4: C14

KNOLL, K3 south ext., Feature N8. ? PHASE

Foundations of a curved wall found on the south facing slope of the Knoll . Two to three courses remained 2' (60cm) high and 10' ( 3m) in length exposed. It was set into the face of the slope and overlain with clay/earth, small stones and rubble. It would appear that this wall perhaps terminated here at the west end where it distinctly curved north though it may have been cut away when the V-shaped ditch, feature N11, (K3ext.), was cut. This ditch may have been part of the same defense system with the wall acting as a retaining wall.

Co-ords.: - west( U3 - 10', U4 - 19'2") east( T3 - 10'4", S3 - 10'4").

KNOLL, K4ext., Feature N12. 12th. century.

Remains of a 12th. century structure. About 15' (4.50m) long by 1'8"(50cm) high of curved wall was exposed with no really substantial stones in the footings, the largest being 1'4"x11"x4"(40x28x10cm). Granites, red and brown sandstones and a few pieces of green shale bedded in clean clay formed the foundation layer. The first course varied in thickness from 2'2"-2'6"( 65-75cm) and contained two post holes within it towards the southern end. In close association with the stonework some 27 flat and square headed nails were found, the majority of these had clay adhering to them.

Co-ordinates: - north (Q4 - 5'11", Q3 - 19'3") south ( Q4 - 14'3", Q3 - 4'9")

mid point, west ( Q4 - 9'10", Q3 - 13'3")

KNOLL, K3ext. Feature N11.

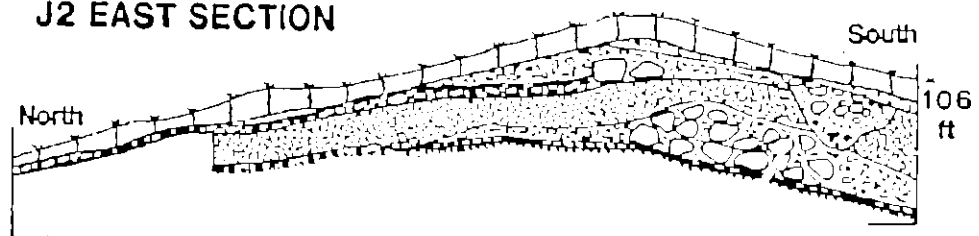
V-shaped ditch cut into base clay on the extreme west end of the site below the Knoll. The ditch cuts the palisade trenches of Phase II and the cobbling of Phases II and III. It also contains tumbled stones from the twelfth century and a few sherds of twelfth century pottery so may be contemporary with 12th century structures. It may also be related to the remains of the curved walling N8.

Co-ords.: - base of V-shaped ditch north( W4 - 13'7", V4 - 4' )  
south( W4 - 15', V4 - 7'10"). North bank co-ords.: - west( W4 - 7'4", V4 - 9'2") east( V4 - 5'9", U4 - 10'10") south bank  
co-ords.: - west( W4 - 10', V4 - 11'6") east( V4 - 9'6", U4 - 12'5").

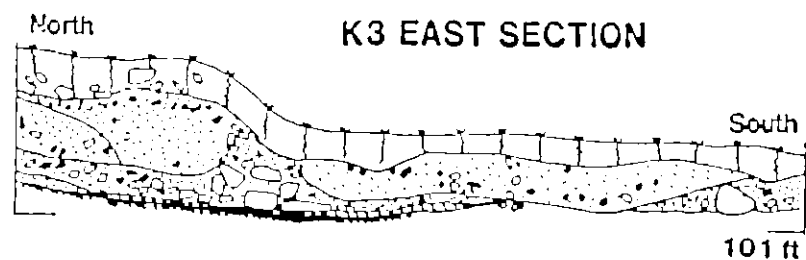
CULLYKHAN

KNOLL SECTIONS

J2 EAST SECTION



K3 EAST SECTION



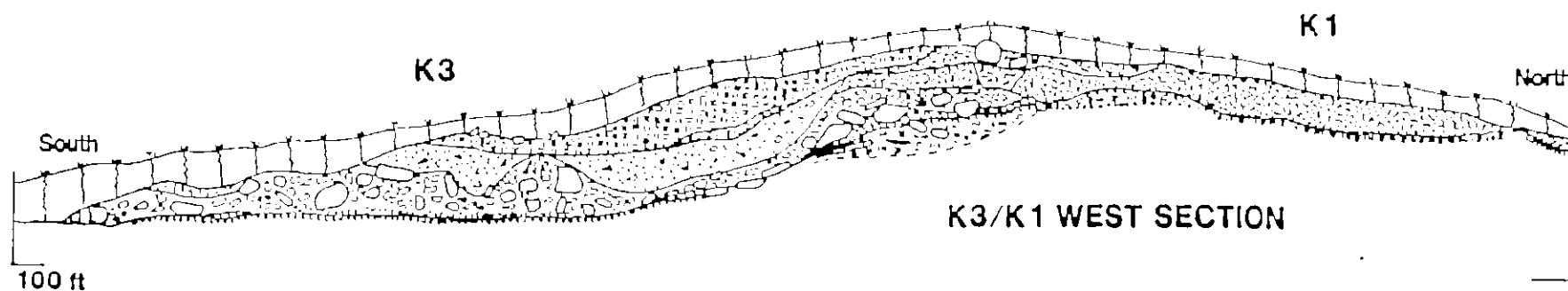
K4 EAST SECTION



K3

K1

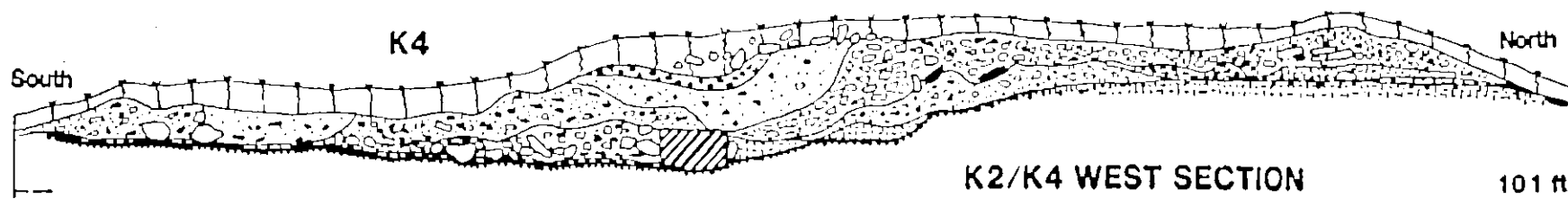
K3/K1 WEST SECTION



K2

K4

K2/K4 WEST SECTION



K3

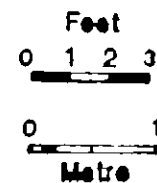
K4

K3/K4 NORTH SECTION



KEY TO SYMBOLS

	Topsoil		Compact clay
	Large SHALE RUBBLE Small		Loose clay
	Large RANDOM STONES Small		Yellow CLAY
	in situ		Orange CLAY
	Ash		Grey CLAY
	Brown earthy OCCUPATION		Compact EARTH
	Grey OCCUPATION		Loose EARTH
	Charcoal/carbon		Small PEBBLES
			Large PEBBLES
			Rough PEBBLES
			Smooth PEBBLES



Cullykhan, Castle Point Troup.

List of Post Holes Possibly Belonging to 12/13th Century  
on the Knoll.

PH23

Diameter 9"(23cm); depth 10"(25cm); oval surface shape; U shaped section; some stone packing on the west side; large stone lies to the south east of it; fill:- brown/grey earth with some small stones; no finds . KNOLL, K3. Co-ords.: - north( T3 - 7'4", S3 - 9' ) south( T3 - 7'1", S3 - 8'8").

PH24

Diameter 9"(23cm); depth 10"(25cm) ; circular surface shape; U shaped section, some packing stones on N.; some edging stones on west,north and east; fill:- grey/brown earth; no finds; lies in entrance to gateway near gate slot, Feature N6, between N6 and N7, but of later date; possible associated with PH25 and PH26. KNOLL, K3. Co-ords.: - north/west( T3 - 14', S3 - 14'3") south/east( T3 - 13'10", S3 - 13'1"). (illustrated).

PH25

Diameter at top 2' (61cm) tapers into 9"(23cm) about 4"(10cm) from base; depth approx.10"(25cm); almost triangular surface shape; two large stones lie on the edge on the south east, one large stone in it; fill:- brown earth with small stones; no finds; lies in gate way entrance but of later date, probably 12th.century. KNOLL, K3. Co-ords.: - north( T3 - 12'1", S3 -

15') south(T3 - 10'3", S3 - 13'7").

PH26

Diameter 8"(20cm); depth 8"(20cm); circular surface shape; U shaped section; stone packing with large stones lying on the edge to the north-west and south-east; fill:- grey/brown clayey earth; no finds; lies in entrance to gateway but of later date . KNOLL, K3. Co-ords.:- north( T3 - 12'7", S3 - 16'9") south( T3 - 11'7", S3 - 16'2").

PH27

Diameter 8"(20cm); depth unknown; circular surface shape; some stone packing remains on north side; no further notes; lies in entrance to gateway but of later date. KNOLL, K3. Co-ords.:- north( T3 - 17'1", S3 - 20'10") south( T3 - 16', S3 - 20'1").

PH28

Diameter 6"(15cm); depth unknown; circular surface shape; no further notes; lies in entrance of gateway to the east of gate slot, Feature N6, of later date . KNOLL, K4. Co-ords.:- north( T3 - 18'10", S3 - 12'3") south( T3 - 18'4", S3 - 11'6").

PH31

Diameter 8"x1'(20x30cm); depth approximately 1'(30cm); oval surface shape; some stone packing; lies at slight angle in the east side of the possible continuation of the ditch feature N11; fill:- fairly loose brown earth and a few small stones; no



finds. ? May be part of a bridge structure over ditch. KNOLL,  
J6. Co-ords:- east(U3 - 4'2", T3 - 11'11") west(U3 - 3'7", T3 -  
11'8").

PH41

Diameter 10"(25cm); depth 1'(30cm); circular surface shape; U  
shaped section; stones surround the top but no apparent lining  
stones; fill:- fairly loose brown earth with some small stones;  
no finds; lies on the extreme north edge of the trench.

KNOLL, K1. Co-ords.:- north( S6 - 6'7", S5 - 16'3") south( S6 -  
6'9", S5 - 15'1").

PH42

Diameter 1'2"(35cm), depth unknown as large stone jammed  
inside, not fully excavated; oval surface shape; fill:- loose  
brown earth; no finds. KNOLL, J2. Co-ords.:- north( U5 - 8'3",  
T5 - 9'3") south( U5 - 7'10", T5 - 8'8").

PH43

Diameter 1'4"(40cm); depth 6"-8"(18cm); circular surface shape;  
flat bottomed; fill:- dark grey/ brown clayey earth with some  
charcoal fragments; no finds; KNOLL, K1. Co-ords.:- north( S6  
- 7'7", R6 - 11') south( S6 - 8'10", R6 - 12'). (illustrated).

PH44

Diameter 12"(30cm); depth 6"(15cm); oval surface shape;  
shallow; wide angled sides with east side steeper than others;

fill:- grey/brown clayey earth; no finds . KNOLL, K2.

Co-ords.:- north( S6 - 11'6", R6 - 6'1") south( S6 - 11'10", R6 - 7' ). (illustrated).

PH46

Diameter 9"(23cm); depth 6"(15cm); oval surface shape; U shaped section; some stone pecking; fill:- loose brown earth; no finds; on extreme northern edge of trench. KNOLL, K2.

Co-ords.:- north( S6 - 4'5", R6 - 11'2") south( S6 - 5', R6 - 11'5").

PH48

Diameter 10"(25cm); depth 7"(18cm); oval surface shape; U shaped section; stone lining in north-east; fill:- brown earth with some stones; no finds; lies on north edge of trench beside PH41. KNOLL, K1. Co-ords.:- north( T6 - 8'1", S6 - 7'10") south( T6 - 8'4", S6 - 8'1").

PH49

Diameter 10"-1' (25-30cm); depth approx. 5"(12cm); oval surface shape; curved base, wide angled, very shallow, may not be fully excavated; fill:- dark grey/brown earth; no finds. KNOLL, K1. Co-ords.:- north( T6 - 9'7", S6 - 9'8") south ( T6 - 10'1", S6 - 10'3"). (illustrated).

PH50

Diameter 1' (30cm); depth 6"(15cm); roughly triangular surface

shape; some stones on edge and down side in the east; fill:-  
grey/brown earth with some stones; no finds . KNOLL, K1.

Co-ords.: - north( T5 - 9'3", S5 - 9'5") south( T5 - 8'9", S5 -  
8'11").

PH51

Diameter 10"(25cm); depth 5"(12cm); irregular but roughly  
circular surface shape; curved base, wide angled, shallow;  
fill:- grey/brown clayey earth; no finds . KNOLL, K1.

Co-ords.: - north( T5 - 8', S5 - 12'4") south( T5 - 7'2", S5 -  
12'). (illustrated)

PH52

Diameter 10"x1'2"(25x35cm); depth 6"-8"(15-20cm); roughly oval  
surface shape; U shaped section, sides steeper on south than on  
others; fill:- grey/brown clayey earth, some stones in fill,  
larger pebbles near base but probably not for base; no finds.  
KNOLL, K1. Co-ords.: - north( T5 - 5'5", S5 - 12'6") south( T5 -  
4'5", S5 - 12'1"). (illustrated).

PH53

Diameter 8"x1'2"(20x35cm); depth 6"(15cm); irregular surface  
shape; rounded base; fill:- grey/brown earth with a few small  
stones; no finds . KNOLL, K1. Co-ords.: - north( T5 - 7'10", S5  
- 14') south( T5 - 7', S5 - 13'6").

PH54

Diameter 9"(23cm); depth 7"(17cm); roughly oval surface shape; rounded base; some possible packing stones on the east side; fill:- grey/brown soil with some small stones; no finds . KNOLL K2. Co-ords.: - north( S5 - 12'1", R6 - 17'11") south( S5 - 12'1", R6 - 19'1").

PH56

Diameter 4"x5"(10x12cm); oval surface shape: may be later. KNOLL, K2. Co-ords.: - north( S5 - 21'3", Q4 - 14") south( S5 - 21'5", Q4 - 13'5").

PH57

Diameter 5"x10"(12x25cm); depth 8"(20cm); elongated oval surface shape; U shaped section; fill:- grey/brown earth; no finds. KNOLL, K2. Co-ords.: - north( S5 - 19'3", Q4 - 15') south( S5 - 19'5", Q4 - 14'6").

PH58

Diameter 5"(12cm); depth 6"(15cm); circular surface shape; large stone lies to south, on the edge; fill:- grey/brown earth; no finds . KNOLL, K2. Co-ords.: - north ( S5 - 8'11", S6 - 21'6") south( S5 -9'3", S6 - 22'1").

PH59

Diameter 4"(10cm); depth 6"(15cm); oval surface shape; stones lie round edge on surface; fill:- brown earth; no finds .

KNOLL, K1. Co-ords.: - north( S5 - 5'3", S6 - 16'3") south( S5 - 5'3', S6 - 16'9").

PH60

Diameter 8"(20cm); depth 8"(20cm); circular surface shape; U shaped section; some stone packing; fill:- grey/brown earth; no finds . KNOLL, K1. Co-ords:- north( T5 - 13'7", S5 - 3'6") south( T5 - 13'5", S5 - 3'1").

PH63

Diameter 6"(15cm); depth 8"(20cm); oval surface shape; no packing stones; fill:- brown earth; no finds; KNOLL, J2. Co-ords.: - north( U5 - 12'11", T5 - 5'8") south( U5 - 12'6", T5 - 5').

PH72

Diameter 1'x11"(30x28cm); depth 7"(17cm); circular surface shape; U-shaped profile; small pebbles round interior; lies within structure defined by N12; set into floor debris but does not go through actual floor; fill:- brown earth and small pieces of shale; no finds; KNOLL, K4 extension east. Co-ords:- north(Q3 - 7'5", Q4 - 10'7") south( Q3 - 7', Q4 - 11'2").

PH73

Diameter 9"x11"(22x28cm); depth approximately 10"(25cm); oval shaped; steep sided; lies within the wall of Feature N12, with the wall stones forming the sides; lies towards south end of

feature N12; fill:- brown earth and small stones; no finds;  
KNOLL, K4 extension east. Co-ords:- North(Q3 - 8', Q4 - 12')  
south(Q3 - 7'8", Q4 - 12'5").

PH74

Diameter 8"(20cm), depth approximately 9"(22cm); circular  
shape, steep sided; lies within wall N12 with stones of wall  
forming sides; at centre of feature; fill:- loose brown earth  
and small stones; no finds; KNOLL, K4 extension east. Co-ords:-  
north( Q3 - 12'10", Q4 - 8'9"), south( Q3 - 12'8", Q4 - 9')

PH75

Diameter 8"x6"(20x15cm), depth approximately 10"(25cm); oval  
shape, steep sided; lies within wall Feature N12, with wall  
stones forming sides; at north end of feature N12; fill:- brown  
earth and small stones; no finds; KNOLL, K4 extension east.  
Co-ords:- north(Q3 - 17'7", Q4 - 5'9") south(Q3 - 16'10", Q4 -  
5'10").

Mineral Sciences Group.

Three artefacts collected from Cullykhan, Banffshire were submitted for mineralogical/petrological examination on behalf of the Museums of Antiquities, Edinburgh, by N.A.Ruckley. Two pieces were similar, being identified as spindle whorls, while the third was rectangular in shape, pierced at one end.

The spindle whorls appear to be composed of the same rock type, having the appearance of impure soapstone or serpentinite. The latter identification was confirmed by X-ray powder photography of a small sample scraped from the inner surface, the pattern obtained being dominantly of a mineral of the serpentine group. It is not possible to comment specifically on provenance but it is to be noted that this rock-type occurs at several localities in the Highland and Grampian regions, including Aberdeenshire and Banffshire. Other European sources cannot be discounted.

The rectangular artefact is fashioned from a much harder rock, apparently a fine-grained quartzose mica schist. Similar rocks occur in the Dalradian of Banffshire but are also found elsewhere in Northern Scotland and Northern Europe.

Pottery Fabric Description by Charles Murray.

Catalogue and Table by Moira Kennedy Greig

Fabric 1

Rhenish blue-grey ware. Hard whitish core with dark grey metallic or lustrous surfaces. Probably produced at Paffrath east of Cologne: 12-13th century.

1 rim sherd, 5 body sherds; total 1 vessel - ladle

Illustration of SF 429

SF177 Wall sherd, slight carination, probably broken at neck; size 32x41mm, thickness 5mm; interior dark grey, exterior dark grey, core light grey; rilling and fingering marks, slightly lustrous; fairly smooth feel; straight fracture. Context : K4 ext. west, layer 1.

SF324 Wall sherd; size 15x20mm, thickness 3mm; interior dark grey, exterior dark grey, core light grey; some soot on interior and exterior, wiping and scoring evident; fairly smooth feel, exterior smoother than interior, slightly lustrous look; straight fracture. Context: K4 ext east, layer 2, layer above floor sealing.

SF347 Wall sherd, slight carination; size 33x42mm, thickness 5mm;



interior dark grey, exterior dark grey, core light grey;  
rilling and evident; fairly smooth feel; straight fracture.  
Context: K4 ext east, layer 4, floor surface.

SF421 Two fragments of wall sherd; size 17x20mm and 15x17mm,  
thickness 5-7mm; interior dark grey, exterior dark grey,  
core light grey; traces of soot on interior and exterior,  
some wiping and fingering evident; fairly smooth interior,  
fairly smooth slightly sandy exterior; fracture fairly  
straight.

Context: K4 ext east, layer 4, floor fill.

SF429 Rim sherd, everted; diameter 8.50cm; size 40x50mm, rim  
thickness 6mm, wall thickness 4-5mm; interior very dark  
grey, exterior very dark grey, core very light grey;  
slightly lustrous look; evident; fairly smooth feel;  
straight fracture.

Context: K4 ext east, layer 4, floor fill. Illustrated.

#### Fabric 2

Coarse grey gritty ware. Hand made, buff surfaces, grey  
core. Sooting on some surfaces. Plain everted rims. ? NE Scotland  
or E Anglian : ? early 12th century.

8 rim sherds, 24 body sherds: total 8/9 vessels -  
cooking pot

Illustration of SF49b, 103, 224, 319, 404, 427, 436

SF45 Wall sherd, joins 46 and 173; size 33x55mm, thickness 4-6mm; interior dark grey-brown, exterior dark grey-brown, core dark grey; fingering evident, possible grain or seed imprint; sandy, rough feel, interior rather uneven; fairly straight fracture, abraded.  
Context: K3, layer 1

SF46 Wall sherd, joins 45 and 173; size 40x60mm, thickness 4-5mm; interior dark grey-brown, exterior dark grey-brown, core dark grey; fingering evident, grass imprint on exterior; rough feel, interior uneven; fairly straight fracture, abraded,  
Context: K3, layer 1

SF49b Base sherd; size 33x40mm; basal diameter 10cm, base thickness 5mm, wall thickness 6mm; interior very dark grey-brown, exterior dark grey-brown, core dark grey; traces of soot on exterior, wiping marks evident, grass imprint on base; rather rough, sandy feel; fairly straight fracture.  
Context: K3, layer 2. Illustrated, profile only

SF75 Wall sherd; size 25x35mm, thickness 4-6mm; interior grey/buff, exterior dark grey/ orangey-buff, core dark grey; wiping marks, ridging or rilling on exterior, soot traces on both surfaces; slightly sandy feel; fairly

straight fracture.

Context: Alpha X, layer 2

SF88 Wall sherd; size 17x18mm, thickness 4mm; interior light grey, exterior grey, core grey; rilling on interior, wiping marks evident; smooth feel; straight fracture.

Context: K1, layer 1

SF100c Wall sherd; size 28x42mm, thickness 6mm; interior dark grey/ brown, exterior dark grey/buff, core dark grey; some wiping marks evident; rough, sandy feel; fairly straight fracture, abraded.

Context: K3, layer 3a

SF103 Four adjoining rim sherds, everted, obliquely flattening towards inner corner; diameter 12.50cm; size 23x69mm, thickness 7mm; interior dark grey/brown, exterior orangey grey-brown, core dark grey; some wiping marks evident; sandy, rather rough feel; fracture fairly straight, abraded.

Context: Knoll, layer 3. Illustrated.

SF168 Two adjoining wall sherds; size 43x48mm, thickness 6mm; interior buff, exterior orangey-buff, core grey; wiping marks evident; sandy, rough feel, interior rougher than exterior; fracture fairly straight.

Context: K2/K3 baulk, layer 1

SF170 Wall sherd; size 28x34mm, thickness 4mm; interior very dark grey, exterior very dark grey, core dark grey; some wiping marks evident exterior smooth feel, slightly lustruous, interior slightly sandy feel; straight fracture.

Context: K4 ext, layer 1

SF173 Wall sherd, joins SF45 and SF46; size 32x36mm, thickness 5-7mm; interior dark grey/brown, exterior dark grey/brown, core dark grey; wiping marks evident; sandy, rough feel, interior uneven; fairly straight fracture, abraded.

Context: K2/K4 haulk, layer 2

SF183 Wall sherd; size 20x26mm, thickness 4mm; interior very dark grey, exterior very dark grey, core dark grey; ridging on exterior, some wiping marks and traces of soot evident; exterior fairly smooth, interior slightly sandy feel; fracture fairly straight.

Context: K4 ext west, layer 1

SF186 Wall sherd; size 19x23mm, thickness 4mm; interior dark grey, exterior grey-brown, core grey; grooves on exterior, slight indentation on interior, wiping marks evident; fairly smooth feel; fracture abraded.

Context: K4 ext west, layer 1

SF224 Rim and shoulder sherd, everted; diameter 11.50cm; size

40x64mm, thickness of rim 7mm, wall 4mm; interior grey-brown, exterior dark grey-brown, core grey; soot on interior and exterior, rilling and wiping marks evident; fairly smooth feel; fracture fairly straight, slightly abraded.

Context: K2 ext west, layer 2. Illustrated

SF318 Wall sherd; size 33x38mm, thickness 4mm; interior dark grey, exterior orange/grey-brown, core grey; wiping marks evident, twig indentation visible; exterior fairly smooth, slightly sandy feel, interior rougher; fracture abraded.  
Context: K4 ext east, layer 2, above floor sealing layer.

SF319 Rim sherd, everted; diameter 11cm; size 24x34mm, thickness 7mm; interior dark grey, exterior dark grey-brown, core dark grey; traces of soot on exterior, some wiping marks evident; fairly smooth feel; straight fracture. May be same pot as SF427 & 436  
Context: K4 ext east, layer 2, above floor sealing  
Illustrated.

SF321 Wall sherd; size 19x33mm, thickness 5mm, slightly abraded; interior dark grey/brown, exterior orangey/grey-brown, core orangey-grey; soot traces on exterior, some fingering evident; fairly smooth, slightly sandy feel, exterior smoother than interior; fracture abraded.  
Context: K4 ext east, layer 2, above floor sealing layer

SF323 Rim sherd, everted, flat rim, gentle rounded inner edge, sharply rounded outer edge; insufficient to determine diameter; size 18x25mm, thickness 5-8mm; interior orange/grey-brown, exterior orange /grey-brown, core orange; wiping and some scoring evident; fairly smooth, slightly sandy feel; abraded fracture.

Context: K4 ext east, layer 2, above floor sealing layer

SF341 Wall sherd; size 19x20mm, thickness 4-5mm; interior dark grey/ brown, exterior grey-brown, core dark grey; soot traces on both surfaces, some wiping marks evident; possible exterior decoration or twig indentation; fairly smooth, slightly sandy feel; fracture abraded.

Context: K4 ext east, layer 4, floor surface

SF342 Wall sherd; size 22x25mm, thickness 4-5mm; interior dark grey-brown, exterior dark grey-brown; core dark grey; some soot on exterior, wiping marks evident; smooth feel to exterior, almost burnished look, interior slightly sandy feel; fracture straight.

Context: K4 ext east, layer 4, floor surface

SF345 Wall sherd, slight carination; size 24x27mm, thickness 4mm; interior very dark grey-brown, exterior very dark grey-brown, core dark grey; soot on exterior, slightly lustrous, burnished look, some wiping evident; fairly

Context	FABRIC TYPE								No of fabrics
	1	2	3	4	5	6	7	8	
K1 Layer 1		■							1
K2 ext W, L 2		■		■					1/2
K2/K3, L 1		■							1
K3, Layer 1		■	■						2
K3, Layer 2		■	■						2
K3, Layer 3a		■							1
K3 ext, Layer 2				■					1
K3 ext, Layer 3				■					1
K3 ext, Layer 3a				■					1
K3 ext, Layer 3b				■					1
K2/K4 haulk, L 2		■		■					2
K4 ext west, L 1	■	■	■			■	■	■	6
K4 ext east, L 1						■			1
K4 ext east, L 2	■	■	■						3
K4 ext east, L 3				■					1
K4 ext east, L 4	■	■	■				■	■	5
K4 ext north, L 4						■			1
L6, Layer 1		■							1
Alpha X, L 2		■			■				2
Beta 1 haulk, L 1				■					1
No of contexts	3	12	5	7	2	3	2	1	1

1 vessel - ? jug. Illustrated

SF423 Adjoining rim sherds, may be part of spout, slight

SF425 decoration with some smearing over outer lip, double

ridge below; size 24x27mm, rim thickness 6mm, wall

thickness 4mm; interior grey orangey-buff, exterior

orangey-buff, core orangey-buff; wiping marks; slightly

sandy feel; fracture fairly straight.

Context: K4 ext east, layer 4, floor fill. Illustrated.

<u>FABRIC</u>	1	1	2	3	4	5	6	7	8	8a	1
<u>No. of rims</u>	1	1	8	-	1	1	1	-	1	-	1
<u>Body sherds</u>	1	5	24	17	9	1	1	3	2	-	1
<u>Basal Sherds</u>	1	-	-	4	1	1	-	2	-	2	-
<u>No of vessels</u>	1	1	8	1	1	1	1	1	1	1	1



Fabric 8

Orange-brown sandy ware. Although abraded, bears traces of white slip and brown glaze. ? local/ NE Scotland. ?12th/13th century.

2 body sherds(1 handle fragment), 2 basal sherds.

Total 1 vessel - ? jug.

Illustrated: SF 180 and 181

SF180 Possible basal sherd with thin applied strip with possible decoration; size 25x30mm, thickness 4mm; interior red-brown with traces of greyish slip, exterior grey/brown, core grey; scoring and wiping marks evident; fairly smooth, slightly sandy feel; fracture straight, slightly abraded.  
Context: K4 ext west, layer 1. illustrated.

SF181 Possible handle fragment, one side broken; decorated on exterior with double row of small nail nicks near rim; size 29x30mm, thickness 8-9mm; interior red/brown, exterior red with greyish slip, core grey; wiping and fingering marks; fairly smooth feel; straight fracture.  
Context: K4 ext west, layer 1. illustrated.

Fabric 8a

Very similar to Fabric 8 but slightly micaceous with red inclusions ? local/ NE Scotland. ?12th/13th C

1 rim sherd ( possibly part of a ? pinched spout).

straight.

Context: K4 ext north, layer 4.. Illustrated

Fabric 7

Mid grey, sandy, fairly fine ware. Possibly English. c 13th/14th Century.

3 body sherds. Total 1 vessel

SF177b Wall sherd; size 23x39mm, thickness 4-5mm; interior grey, exterior dark grey, core grey; soot on both surfaces, rilling, fingering and scoring marks, possible burnt out inclusions; fairly smooth feel, very slightly sandy; fracture straight.

Context: K4, ext west, layer 1

SF187 Wall sherd; size 18x26mm, thickness 4mm; grey/dark grey, exterior dark grey, core grey; soot on interior and exterior, rilling and fingering; fairly smooth, slightly sandy feel; fracture straight.

Context: K4 ext west, layer 1

SF389 Wall sherd; size 15x20mm, thickness 4mm; interior grey / dark grey, exterior dark grey, core grey; soot traces on both surfaces, rilling and fingering; fairly smooth, slightly sandy feel; fracture straight, slightly abraded.

Context: K4 ext east, layer 4, floor surface

Context: K4 ext east, layer 3, floor sealing layer.

Illustrated.

Fabric 6

Green-glazed, pale grey sandy ware. Spot glazing on basal sherds.

Possibly N England : 13th/14th century.

1 body sherd, 2 basal sherds. Total 1 vessel - jug

Illustrated: SF 405

SF117 Wall sherd; size 30x45mm, thickness 4mm; interior buff; exterior grey with shiny, pale greeny/brown glaze, core light grey; rilling visible, wiping marks evident; smooth feel; fracture straight.

Context: K4 ext west, layer 1

SF346 Base sherd; flat base; insufficient to determine diameter; size 22x26mm, base thickness 4mm, wall thickness 5mm; interior gray-buff, exterior dark grey/buff with spots of pale green glaze, core grey; wiping marks evident; smooth feel; fracture straight.

Context: K4 ext east, layer 2

SF405 Base sherd; flat base; Diameter 10cm, size 20x40mm, base thickness 4mm, wall thickness 6mm; interior grey-buff; exterior grey-buff with spots of green glaze, core grey; wiping and some scoring marks; smooth feel; fracture

feel; fracture straight.

Context: Beta I bank, redeposited.

SF485 Wall sherd; size 38x64mm, thickness 4mm; interior grey / pinky buff, exterior grey-buff, core grey; soot traces on both surfaces, ridging on exterior, wiping marks evident; slightly rough feel, fracture straight.

Context: K2, layer 3

#### Fabric 5

Scarborough-type ware. Buff-orange sandy fabric. Lustrous green glaze. Yorkshire : 13th/14th century.

1 rim sherd, 1 body sherd. Total 1 vessel - Jug

Illustratio: SF 438

SF82 Wall sherd; size 23x34mm, thickness 5mm; interior pale orange, exterior shiny olive green glaze, core pale orange; rilling on interior; smooth feel; fracture straight.

Context: Alpha X, layer 2

SF438 Rim sherd, everted, rectangular section, slight depression on top surface and below inner corner; size 33x50mm, rim thickness 10mm, wall thickness 5mm; interior light orange, exterior light orange with patch of shiny olive green glaze, core light orange; some wiping marks; fairly smooth feel; fracture straight.

exterior dark grey/buff, core buff; rilling on interior, wiping marks, burnt out inclusions on exterior, vertical shallow ridges on exterior; fairly smooth feel; fracture straight.

Context: K3 ext, layer 3b

SF147 Rim sherd; slightly everted, square section with rounded corners; size 22x57mm, rim thickness 18mm, wall thickness 5mm; interior light grey/buff, exterior grey/buff, core light grey; wiping marks; fairly smooth feel; fracture straight.

Context: K3 ext, layer 2. Illustrated

SF171 Wall sherd, possibly near shoulder; size 38x39mm, thickness 4-6mm, interior biscuit, exterior grey/buff, core light grey; traces of soot on exterior, wiping marks and rilling; fairly smooth feel; fracture fairly straight.

Context: K2/K4 bulk, layer 2

SF172 Wall sherd; size 16x25mm, thickness 5mm; interior grey/buff, exterior grey-brown, core grey-buff; soot traces, wiping marks; slightly sandy feel; fracture straight.

Context: K2/K4 bulk, layer 2

SF176 Wall sherd; size 34x43mm, thickness 4-6mm; interior grey-buff; exterior grey-buff, core grey; soot traces on both surfaces, rilling and wiping marks evident; fairly smooth

SF99 Wall sherd; size 32x32mm, thickness 3-4mm; interior buff, exterior grey-buff, core light grey; rilling and wiping marks evident; fairly smooth feel, interior slightly rougher; fracture straight.

Context: K3 ext , layer 3a

SF100b Base sherd; flat base; size 32x55mm, base diameter 9.50cm, base thickness 5mm, wall thickness 6mm; interior pinky-buff, exterior grey-buff, core light grey; wiping and scoring marks evident, some smearing on corner; slightly rough feel; fracture straight.

Context: K3 ext, layer 3a. Illustrated, profile only

SF103 Wall sherd; size 27x28mm, thickness 4-5mm; interior dark grey, exterior grey/orangey-buff, core grey; pronounced ridgeing on exterior, some wiping marks evident; slightly sandy feel, interior rougher than exterior; fracture fairly straight.

Context: K3 ext, layer 3

SF108 Wall sherd; size 23x29mm, thickness 4mm; interior light grey/buff exterior orangey-buff, core light grey; rilling and wiping evident; fairly smooth feel, interior rougher than exterior; fracture straight.

Context: K3 ext , layer 3

SF123 Wall sherd; size 32x49mm, thickness 6mm; interior biscuit,

SF437 Wall sherd; size 38x45mm, thickness 5-6mm thick; interior grey/buff exterior dark grey/buff, core grey; wiping and scoring evident, finger indentation on interior; sandy feel; fracture fairly straight, abraded.

Context: K4 ext east, layer 4, floor fill

SF467 Wall sherd; size 20x35mm, thickness 4mm; interior grey / buff, exterior buff, core grey; traces of soot and grass indentation on exterior, wiping and scoring evident; slightly sandy feel; fracture fairly straight, abraded slightly.

Context: K4 ext east, layer 4, floor fill.

#### Fabric 4

S Scottish White Gritty ware. Off-white quartz gritted, hard, with some sooting. ? late 12th/ early 13th century.

1 rim sherd, 9 body sherds, 1 basal sherd. Total 1 vessel - storage or cooking jar.

Illustration: SF 100b ( profile only) and 147

SF89 Wall sherd; size 21x26mm, thickness 4mm; interior pinky-buff, exterior dark grey-brown, core grey; soot traces on exterior, rilling and wiping marks evident; slightly rough feel, exterior smoother than interior; fracture straight.

Context: K3 ext, layer 3a

fracture straight, slightly abraded.

Context: K4 ext east, layer 4, floor surface.

SF407 Wall sherd; size 27x33mm, thickness 5mm; interior dark grey-brown, exterior dark grey-brown, core dark grey; grass indentations, wiping, scoring evident; sandy feel, interior uneven; fracture fairly straight, abraded slightly.

Context: K4 ext east, layer 4, floor surface

SF409 Wall sherd; size 23x25mm, thickness 4mm; interior orangey-buff, exterior grey/orangey-buff, core grey; ridging on exterior, wiping evident; sandy feel; fracture abraded.

Context: K4 ext east, layer 4, floor surface

SF423 Wall sherd; size 24x26mm, thickness 4mm; interior dark grey-brown, exterior grey-brown, core grey; wiping and scoring evident; sandy feel, exterior smoother than interior; fracture straight, abraded.

Context: K4 ext east, layer 4, floor surface.

SF434 Wall sherd; size 34x37mm, thickness 4mm; interior orangey-buff, exterior grey/orangey-buff, core grey; grass indentation on interior, fingering and scoring evident; sandy feel, rather uneven, fracture fairly straight, slightly abraded.

Context: K4 ext east, layer 4, floor fill



interior slightly uneven; fracture fairly straight,  
slightly abraded.

Context: K4 ext east, layer 4, floor surface

SF372 Wall sherd; size 24x27mm, thickness 7-9mm; interior  
grey-brown, exterior grey/orangey-brown, core grey; wiping  
and scoring marks evident; sandy feel; fracture fairly  
straight, abraded.

Context: K4 ext east, layer 4, floor surface.

SF390 Base sherd; size 32x37mm, base thickness 7mm, wall  
thickness 6mm; interior grey-brown, exterior grey /  
orangey-brown, core grey; traces of soot on interior,  
wiping and scoring evident; exterior fairly smooth,  
interior sandy, uneven; fracture fairly straight, abraded.

Context: K4 ext east, layer 4, floor surface. Illustrated

SF390b Wall sherd; size 34x49mm, thickness 8mm; interior  
grey/brown, exterior grey/orangey-brown, core grey; traces  
of soot on exterior, wiping and fingering evident; sandy  
feel, interior slightly uneven, fracture abraded.

Context: K4 ext east, layer 4, floor surface.

SF391 Wall sherd; size 30x35mm, thickness 6mm; interior dark  
grey-brown exterior dark grey/orangey-brown, core grey;  
traces of soot on exterior, wiping and scoring evident;  
slightly sandy feel, exterior smoother than interior;

fairly straight.

Context: K4 ext east, layer 2, above floor sealing layer.

Illustrated

SF325 Wall sherd; size 32x48mm, thickness 4-6mm; interior dark grey, exterior orange/grey, core grey; ridging on exterior, some scoring and wiping evident; sandy feel, interior slightly rougher than exterior; fracture fairly straight.  
Context: K4 ext east, layer 2, above floor sealing layer

SF341 Wall sherd; size 45x52mm, thickness 4-6mm; interior dark grey-brown exterior dark grey-brown, core dark grey; some soot on exterior, ridging or rilling, wiping and scoring on interior, indentation of twig, some smearing evident; fairly smooth, slightly sandy feel, interior uneven; fracture fairly straight.  
Context: K4 ext east, layer 4, floor surface

SF344 Wall sherd; size 21x25mm, thickness 6mm; interior orangey-brown, exterior grey/orangey-brown, core grey; grooves on exterior, some wiping evident; sandy feel; fracture abraded.  
Context: K4 ext east, layer 4, floor surface

SF348 Wall sherd; size 37x40mm, thickness 8mm; interior grey-brown, exterior grey/orangey-brown, core grey; traces of soot on both surfaces, wiping evident; sandy feel,

Context: K3, layer 2. Illustrated, profile only.

SF57 Basal sherd; size 48x60mm, thickness 4-6mm; interior dark grey, exterior dark grey/orange-buff, core grey; some scoring and wiping marks; sandy feel, interior uneven; fracture fairly straight

Context: K3, layer 1

SF98 Wall sherd; size 31x44mm, thickness 5-7mm; interior buff, exterior dark grey-brown, core dark grey; soot on exterior, ridging on exterior, wiping marks and rilling on interior; exterior smooth, slightly lustrous, burnished look, interior fairly smooth, slightly sandy feel; straight fracture.

Context: K3, layer 1

SF184 Base sherd; size 32x43mm, base thickness 9mm, thickness 7mm; interior grey/buff, exterior grey/orange, core traces of soot on exterior, some wiping and smearing evident; fairly smooth, slightly sandy feel, interior uneven; fracture abraded.

Context: K4 ext west, layer 1

SF320 Base sherd; size 29x39mm, base thickness 9mm, wall thickness 7mm; interior grey, exterior grey/orangey buff, core grey; some wiping and scoring evident, slight smearing on corner; fairly smooth, slightly sandy feel; fracture

SF431c Wall sherd; size 18x19mm, thickness 4mm; interior dark grey, exterior dark grey, core dark grey; traces of soot, some wiping and scoring evident; fairly smooth feel; fracture straight.

Context: K4 ext east, layer 4, floor fill

SF436 Rim sherd, everted, insufficient to determine diameter; size 22x23mm, thickness 7mm; interior dark grey, exterior dark grey brown, core dark grey; traces of soot, some wiping marks evident; fairly smooth feel; fracture straight.

Same pot as SF319 and 427

Context: K4 ext east, layer 4, floor fill. Illustrated

### Fabric 3

Grey to grey-buff, very sandy, slightly coarse, slightly micaceous ware. No trace of glaze. Local/NE Scottish : c 12th/13th century.

17 body sherds, 4 basal sherds: total 1 vessel -

? Jug

Illustrated : SF 49a, 320 and 390(profiles only)

SF49a Base sherd; size 37x41mm, base diameter c14cm, base thickness 7mm, wall thickness 8mm; interior grey/dark grey, exterior dark grey/ orangey-buff, core grey; traces of soot, wiping marks evident; fairly smooth, slightly sandy feel; fracture slightly abraded.

SF427 Rim sherd, possibly everted, insufficient to determine diameter; size 21x25mm, rim thickness 8mm, wall thickness 6mm; interior dark grey-brown, exterior dark grey-brown, core dark grey; soot on both surfaces, some wiping marks evident; fairly smooth feel; fracture fairly straight. Possibly same pot as SF319 and 436.  
Context: K4 ext east, layer 4, floor fill. Illustrated

SF428 Wall sherd; size 18x24mm, thickness 4mm; interior grey-brown, exterior dark grey, core grey; soot traces on both surfaces, some fingering evident; fairly smooth feel to exterior, interior rougher, slightly gritty; fracture fairly straight.  
Context: K4 ext east, layer 4, floor fill

SF431 Wall sherd; size 39x42mm, thickness 4mm; interior grey-brown, exterior dark grey, core dark grey; soot traces on both surfaces, some fingering, scoring and wiping evident; exterior fairly smooth, interior slightly sandy, uneven; fracture abraded.  
Context: K4 ext east, layer 4, floor fill

SF431b Wall sherd; size 23x32mm, thickness 3mm; interior dark grey, exterior dark grey, core dark grey; soot on both surfaces, some wiping and scoring evident; fairly smooth, slightly sandy feel; fracture fairly straight.  
Context: K4 ext east, layer 4, floor fill

smooth, slightly sandy feel; fairly straight fracture.

Same pot as SF 407.

Context: K4 ext east, layer 4, floor surface.

SF349 Wall sherd; size 16x23mm, thickness 5mm; interior orange/grey brown, exterior orangey/grey-brown, core orangey/grey-brown; some wiping marks evident; slightly sandy feel; fracture straight, slightly abraded.

Context: K4 ext east, layer 4, floor surface

SF391 Wall sherd; size 35x48mm, thickness 5-6mm thick; interior grey brown, exterior grey-brown, core dark grey; traces of slip, some wiping marks evident; fairly smooth, rather uneven feel; fairly straight fracture.

Context: K4 ext east, layer 4, floor surface

SF402 Wall sherd; size 35x36mm, thickness 4mm; interior very dark grey exterior dark grey-brown, core grey; soot on interior, wiping marks evident, ridging on interior; fairly smooth feel; straight fracture.

Context: Knoll, J6, layer 1

SF402b Wall sherd; size 27x43mm, thickness 4mm; interior grey-brown, exterior dark grey-brown, core grey; rilling on exterior, wiping marks evident; fairly smooth feel; straight fracture.

Context: Knoll, J6, layer 1

SF404 Rim shard, everted; size 19x30mm, thickness 6-8mm, diameter 8cm; interior orange/grey-brown, exterior grey-brown, core dark grey; traces of soot on interior, indentation of grass or small twig, wiping marks evident; fairly smooth, slightly sandy feel; fairly straight fracture.

Context: K4 ext east, layer 4, floor surface. Illustrated

SF407 Wall shard, slight carination; size 22x31mm, thickness 4-5mm; interior dark grey-brown, exterior dark grey-brown, core dark grey; soot on exterior, some wiping marks evident; fairly smooth feel to exterior, interior slightly rougher; fracture straight.

Context: K4 ext east, layer 4, floor surface.

SF423 Wall shard; size 15x18mm, thickness 4mm; interior dark grey, exterior dark grey, core dark grey; soot traces on both surfaces, some wiping marks evident; fairly smooth feel; fracture straight.

Context: K4 ext east, layer 4, floor fill

SF426 Wall shard; size 25x29mm, thickness 5mm; interior grey-brown, exterior dark grey, core dark grey; some soot on both surfaces, ridging on exterior, wiping marks evident; slightly sandy feel, uneven on interior; fracture slightly jagged.

Context: K4 ext east, layer 4, floor fill

SF 58 Knoll, K2, layer 2

Flat iron nail head: conserved, too heavily concreted to measure.

SF69a Knoll, K4, layer 2

Flat iron nail head: conserved, head sub-rectangular 26x24mm, shank broken, 7mm square at head.

SF69b Knoll, K4, layer 2

Flat iron nail head: conserved, head sub-rectangular 26x24mm, shank broken, 7mm square at head.

SF90 Knoll, K3 extension, Feature N1, layer 3b

Flat iron nail head: conserved, head sub-circular 21mm diameter, shank broken, 7mm square at head.

SF101 Knoll, K3 extension, Feature N1, layer 3a

Flat iron nail head: conserved, head sub-rectangular 15x18mm, shank broken, 8mm square at head.

SF102 Knoll, K3, layer 3

Iron object, possible nail: badly corroded, unconserved.

SF105 Knoll, K3, layer 3

Flat iron nail head: unconserved, too concreted to measure.



SF107 Knoll, unstratified

Flat iron nail head: conserved, head sub-rectangular 22x26mm,  
shank broken, 7mm square at head.

SF115 Knoll, K3 layer 2

Flat iron nail head: conserved head sub-rectangular 21x21mm,  
shank broken, 7mm square at head.

SF120 Knoll, K3 extension, Feature N1, layer 3b

Flat iron nail head: unconserved, too concreted to measure

SF141 Knoll, K2 layer 2

Iron implement: conserved, but badly concreted, 58x16x10mm,  
possible small chisel.

SF214 Knoll, K4 extension west, layer 2

Iron object: unconserved.

SF215 Knoll, K4 extension west, layer 2

Copper alloy rivet: conserved, folded sheet-metal rivet patch  
9x9x1mm

SF216 Knoll, K4 extension west, layer 2

Iron object: unconserved.

SF219 Knoll, K4 extension west, layer 2

Flat iron nail head: conserved, head sub-rectangular 27x25mm,

shank broken, 8mm square at head.

SF220 Knoll, K4 extension west, layer 2

Flat iron nail head: unconserved

SF221 Knoll, K4 extension west, layer 2

Flat iron nail head: unconserved, head and shank too  
concreted to measure.

SF241 Knoll, K4 extension west, layer 2

Flat iron nail head: unconserved, head too concreted to  
measure.

SF244 Knoll, K4 extension west, layer 2

Iron object: unconserved.

SF290 Knoll, J2 extension south, layer 1

Iron object: unconserved, possible nail head.

SF326 Knoll, K4 extension east, layer 2

Possible flat iron nail head: conserved, too heavily  
concreted to measure.

SF371 Knoll, K4 extension east, layer 2

Iron objects: unconserved, possibly two pieces of nail shank.

SF376 Knoll, K4 extension east, layer 2

Flat iron nail head: conserved, head sub-rectangular 21mm diameter, shank broken, 7mm square at head,

SF380 Knoll, K4 extension east, layer 2

Flat iron nail head: conserved, head sub-circular 22mm diameter, shank broken, 9mm square at head.

SF382 Knoll, K4 extension east, layer 2

Flat iron nail head: conserved, head sub-rectangular 17mm square, shank broken, 9mm square at head.

SF384 Knoll, K4 extension east, layer 2

Fiddle key iron nail head: conserved, 16x6mm with 10mm arched back, shank broken, 6mm at head.

SF394 Knoll, K4 extension north, layer 4

Iron point: unconserved, 16x4x4mm, possibly from a nail.

SF406 Knoll, K4 extension north, layer 4

Flat iron nail head: conserved, head sub-circular 15mm diameter, shank broken, 7mm square at head.

SF408 Knoll, K4 extension north, layer 4

Iron sheet: conserved, but in two pieces, one heavily concreted, one with rivet 37x27x8mm the other 62x4x16mm. Both may have concreted pieces of wood attached.

SF430 Knoll, K4 extension north, layer 4

U-shaped piece of Copper Alloy: unconserved 3mm  
diameterx28x26mm, made from rolled sheet of metal.

SF433 Knoll, K4 extension north, layer 4

Flat iron nail head: conserved, head sub-rectangular 22x21mm,  
shank broken, 11mm square at head.

SF435 Knoll, K4 extension north, layer 4

Fragment of Copper Alloy sheet: unconserved, 5mm thick,  
weight 0.4g, irregularly folded.

SF440 Knoll, K4 extension north, layer 4

Flat iron nail head: conserved, but too heavily corroded to  
measure.

SF466 Knoll, K4 extension north, layer 4

Flat iron nail head: conserved but too concreted to measure.

SF468 Knoll, K4 extension north, layer 4

Iron object: unconserved.

SF476 Knoll, K5, layer 2

Iron axe: conserved but heavily concreted on one side.  
79x28x8mm. The butt of the axe is adapted to form a socket  
8x5mm at right angles to the blade.

SF483 Knoll, K3, layer 2

Iron objects: unconserved, 4 pieces, probably nails.