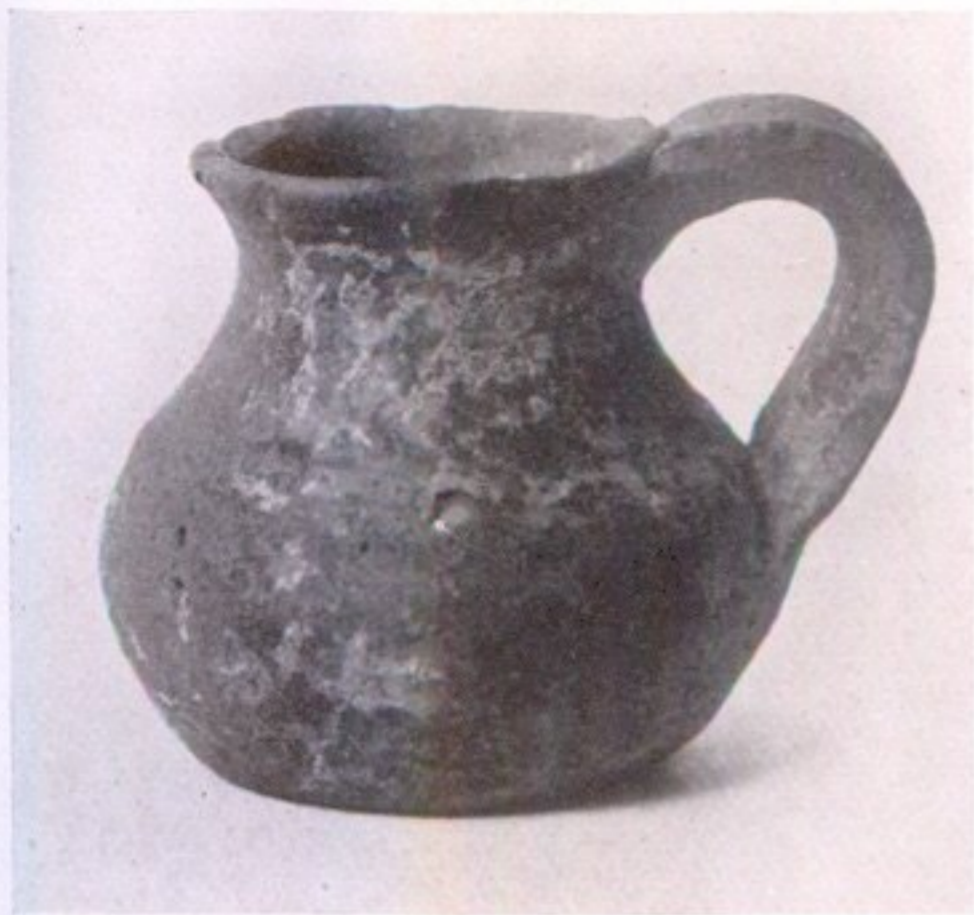


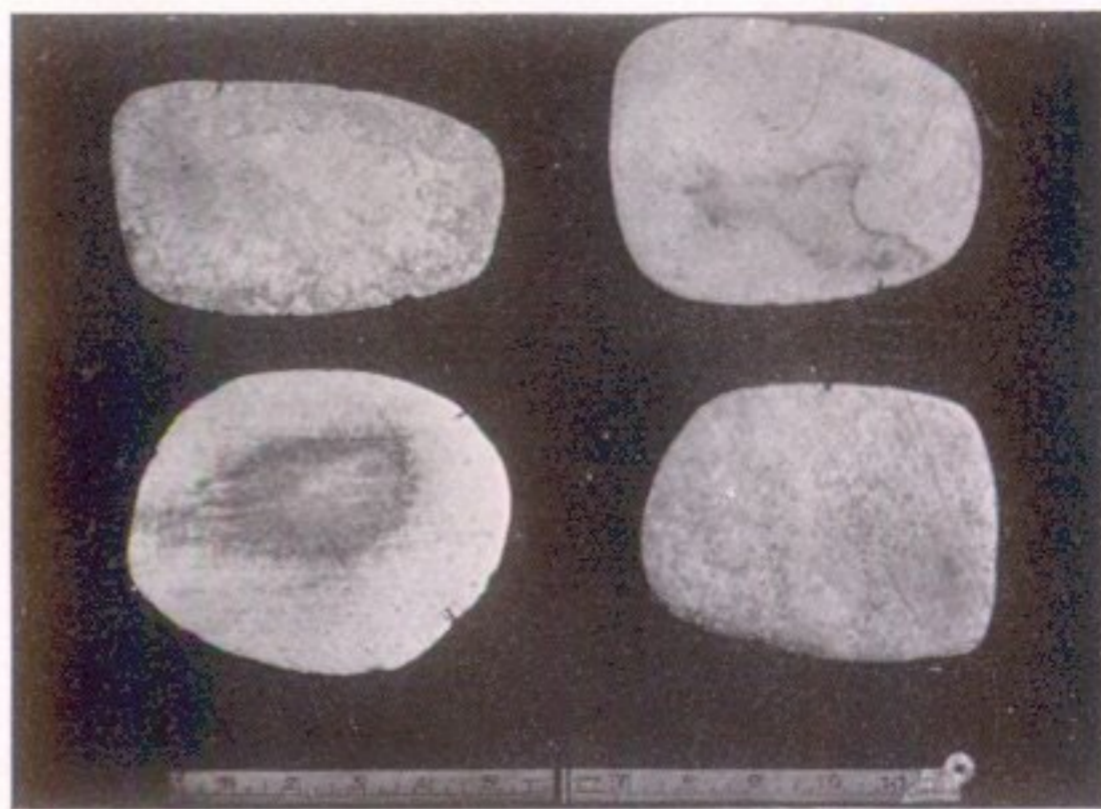
2. A SMALL HOARD OF POLISHED STONE KNIVES AND A POLISHED STONE  
ADZE FROM THE WARD OF SHURTON, NEAR LERWICK.

The Ward of Shurton is 3 miles west-south-west from Lerwick, the road to the south end of the mainland skirting its south-western slope. This hill rises to a height of 525 feet above sea-level, and on its highest point are the remains of a cairn, now so dilapidated that it is impossible to trace the original outline.

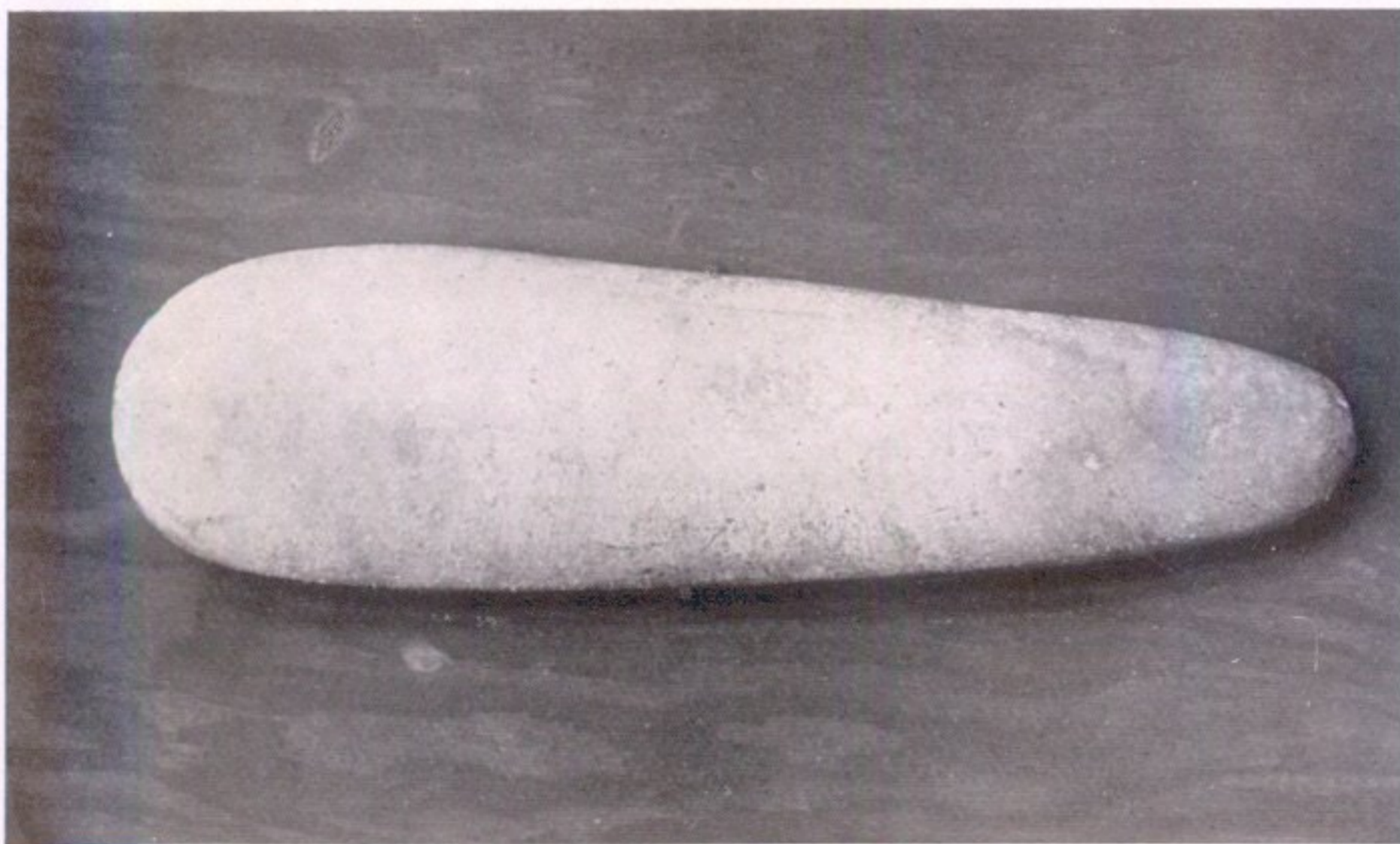
On the western slope, about 75 feet below the summit, continuous erosion due to the action of the elements has removed the turf and surface soil from an area approximately 60 feet by 25 feet and to a depth of 2 feet below the surrounding level. On this bare peaty patch a passer-by in 1934 discovered a hoard of fourteen polished stone knives lying together in a heap, all of which have been lost, except two, which are now in a private collection.



1. Jug of Scottish Mediæval Pottery. ( $\frac{1}{3}$ .)



2. Polished Stone Knives from Shetland.



3. Polished Stone Adze from Shetland. ( $\frac{1}{3}$ .)

While walking over the hill in the latter part of May this year, I found a small hoard of five polished stone knives on the same patch. The knives were lying close together but not overlapping. Unfortunately one was broken into small fragments, probably by some passing animal. These knives are thin, flat, irregularly oval-shaped blades, highly polished on both sides, with sharp edges extending round almost the whole circumference (Pl. XXIII, 2).

Reading from the top left-hand corner of the photograph, the measurements (being taken from circumference to circumference along the vertical and horizontal axes) are: No. 1, 6 inches  $\times$   $3\frac{1}{2}$  inches; No. 2,  $5\frac{3}{4}$  inches  $\times$   $4\frac{1}{2}$  inches; No. 3,  $5\frac{1}{2}$  inches  $\times$   $4\frac{3}{8}$  inches; No. 4,  $5\frac{3}{8}$  inches  $\times$   $4\frac{1}{2}$  inches. All the knives, with the exception of No. 3, which is  $\frac{5}{16}$  inch, do not exceed more than  $\frac{1}{4}$  inch in thickness.

Shortly after finding the knives, I was handed an unusually fine polished stone adze picked up in 1932 on the same turfless patch where the knives were found. It measures  $12\frac{1}{4}$  inches  $\times$   $3\frac{1}{2}$  inches  $\times$   $\frac{1}{8}$  inch, highly polished over the whole surface, with sharp semicircular edge, and of a well-developed edge-like form (Pl. XXIII, 3).

The material used in both knives and adze is a porphyry, spherulitic felsite, and can be procured only from the Uyea Bjorgs, Roeness Hill. The action of the peaty soil has bleached the felsite from its original bluish green to a light grey colour.

It may be of interest to recall that polished stone knives and axes have been unearthed together on a previous occasion, namely at Modesty, West Burrafirth. This discovery is detailed in the *Proceedings*, vol. xxix. pp. 48-54 and vol. xl. p. 157.

My thanks are due to one of the Fellows, Mr L. G. Scott, Lerwick, for identifying the material, and supplying the information regarding the only area in Shetland from which this material can be procured.

PETER MOAR,  
*Corresponding Member.*