

7. A BROOCH FRAGMENT FROM FRESWICK LINKS, CAITHNESS.

In the summer of 1939, Mr Simon Bremner, a Corresponding Member of the Society, while walking over the links at Freswick, came across a heap of red ashes from which the covering sand had been blown away. In examining the heap, in which there was a large admixture of bones and shells, Mr Bremner found a portion of a small silver-gilt penannular brooch (Pl. LIV, 2) which he kindly sent to the Museum.

About half of the brooch remains. It had originally measured about $1\frac{1}{8}$ inch by 1 inch. The under side is flat and shows a few blowholes from the casting, also file marks where it had been cleaned after having been taken from the mould.

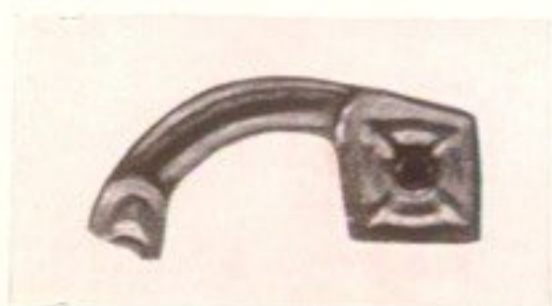
The upper surface of the ornament is partially gilt, and in the centre of the hoop is an oval sunk panel in which there had probably been an amber setting. Between the central portion and the terminal the hoop is traversed longitudinally by a moulding, in relief, running parallel to its flanged edges. The terminal is lozenge-shaped, with raised margins, and at the junction of the terminal with the hoop the edge expands so as to form a small hood. In the centre of the terminal is an amber setting, placed, in relief, within a circle divided into four segments by lines radiating from the setting to each corner of the terminal.

The brooch, in general, has a strong family resemblance to casts made from the moulds of two very similar specimens found at the Mote of Mark, Dalbeattie, by Dr A. O. Curle, C.V.O., LL.D., in 1913,² and probably dates to the end of the eighth or the beginning of the ninth century A.D.

A. J. H. EDWARDS.



1. The Mary Queen of Scots Pendant. ($\frac{2}{3}$.)



2. Fragment of Brooch from Freswick. ($\frac{1}{2}$.)

[To face page 138.]