

III.

NOTICE OF THE DISCOVERY OF TWO CISTS WITH UNBURNT BURIALS, ONE CONTAINING AN URN AND A SMALL BRONZE PIN, ON THE FARM OF DRUMMOND, PARISH OF KILTEARN, ROSS-SHIRE. BY THE REV. WILLIAM WATSON, KILTEARN.

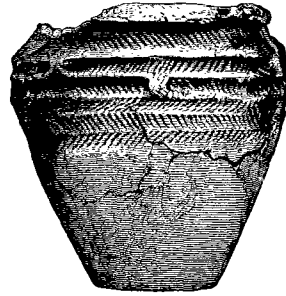
In August last two graves were found on the farm of Drummond, in this parish. They were placed near the summit of a mound of gravel at a place called *The Aonach*. The mound is composed of moraine matter.

First Grave.—Near the top of the mound there was a flat stone on which people sometimes sat. Mr M'Donald, the grieve at Drummond, happened one morning to strike this stone with his walking stick, and observing that a hollow sound was emitted he had the slab removed with the assistance of workmen; and a grave was found containing a human skeleton. I did not see it until after the bones were disturbed. The cist was not rectangular. Its dimensions were as follows:—The two sides, measured internally, were respectively $41\frac{1}{2}$ inches and $35\frac{3}{4}$ inches, and the ends each 21 inches. The depth is 2 feet 6 inches; and the grave lies not north and south, but 12° to the west of north. This observation was made with a prismatic compass, and no allowance was made for declination. The grave was covered by a slab somewhat oval in shape—length, 4 feet 6 inches; greatest breadth, 2 feet 10 inches; breadth at narrow end, 2 feet.

Second Grave.—The discovery led to a search being made for more graves on the mound, and another was found 24 yards to the south of the first. This one I saw before it was disturbed in any way. It is very irregular in shape and rude in construction. Its direction is 30° to the west of north, no allowance being made for declination. It was covered, not by one, but several slabs. Along one side and end there were three rows of horizontal stones above the perpendicular slabs to increase the height of the cist. The head of the skeleton was towards the SE. corner of the cist, and in front of the face of the skull was found an urn not quite complete, and filled with a dark-coloured material.

The urn (which is here represented in fig. 1) measures 6 inches in height and 6 inches diameter at the mouth, first bulging slightly outwards below the brim and then tapering to a base of 2 inches diameter. It is ornamented on the upper part by two slight mouldings parallel to the rim.

The body had evidently been laid on its right side. The head was bent down to the chest, and the knees as far up as possible. The palm of the right hand seems to have been placed under the cheek. The head of the skeleton was in the south-east corner of the grave, and the face looking towards the east. The position of the skeleton in the first grave was the same. The urn was lying on its side with its mouth close to the mouth of the skeleton. A portion of the upper rim of the urn had decayed. It seemed to me



that the urn had not fallen, but had been originally placed on its side; for it was lying so close to the interior wall of the cist that it could not turn on its bottom edge as a pivot so as to be set upright. If it contained food it may have been placed as we found it, so as to be as near the face or mouth of the dead person as possible. A small piece of bronze was also found in this grave. It was about the size of a small darning-needle. Sir Hector Munro of Foulis has preserved it along with the urn in a glass case.

Fig. 1. Urn from a Cist at Drummond Kiltearn, Ross-shire (6 inches in height).

A few years ago, Mr Munro found several similar graves on his farm of Knoockancairn, not far from where the above graves were discovered. An urn was found in one of them, but in a short time it crumbled to dust on the mantle-shelf of Mr Munro's parlour, where it had been placed for safety.