

MONDAY, 12th January 1885.

PROFESSOR DUNS, D.D., in the Chair.

A Ballot having been taken, the following Gentlemen were duly elected Fellows :—

C. S. MURCHISON-BOMPAS, 121 Westbourne Terrace, London.
 ROBERT CHAMBERS, Publisher, 10 Claremont Crescent.
 WILLIAM NICOL ELDER, L.R.C.P. and S.E., 10 West Maitland Street.
 JOHN GRANT, Marchmont Herald.
 C. R. MACDONALD, M.D., Beith.
 Rev. W. M. METCALFE, South Parish Manse, Paisley.
 WILLIAM TRAILL, M.D., of Woodwick.

The following Donations to the Museum and Library were laid on the table, and thanks voted to the Donors :—

(1) By GEORGE H. STEVENS, Gullane.

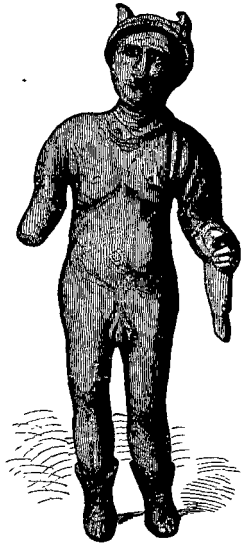
Urn of the so-called "food-vessel" type, measuring $4\frac{3}{4}$ inches in height, $5\frac{1}{2}$ inches diameter across the mouth, narrowing to 3 inches at the base. It is rudely ornamented on the upper part by a band of irregularly parallel lines of impressions of a twisted cord encircling the vessel in a direction parallel to the rim. Below, on the upper part of the slope towards the bottom, there is a band of short vertical lines of the same character. The inside of the rim is bevelled, and ornamented with a band of similar impressions encircling it horizontally.

The urn was found in 1880 in excavating for a quarry on the rise of Luffness Links towards Gullane Hill. It has been well figured in the *Proceedings* of the Berwickshire Naturalists' Club, vol. x. p. 306.

(2) By THOMAS JEFFREY, Farmer, Throsk, Stirlingshire.

Statuette of Mercury in bronze, $4\frac{1}{2}$ inches high, found in ploughing on the farm of Throsk, parish of St Ninians, Stirlingshire. The figure

is nude, with the *talaria* or winged sandals, and the winged *petasus* or head-dress as usually represented. The right hand, which probably bore the *caduceus*, is gone; the left arm sustains a few simple folds of drapery.



Statuette of Mercury found at Throsk, Stirlingshire ($4\frac{1}{2}$ inches high).

(3) By R. VANS AGNEW of Barnbarroch, F.S.A. Scot.

Flat oval Pebble of grey sandstone, 10 inches in length by $7\frac{3}{4}$ inches in greatest width, having a shallow circular cavity $3\frac{3}{4}$ inches in diameter, and not exceeding $\frac{1}{2}$ an inch in depth, in each of its opposite flat sides. The cavities are smooth, and seem to have been produced by friction.

(4) By CHARLES WALLACE of Dally, Kirkcolm, through Rev. GEORGE WILSON, Corr. Mem. S.A. Scot., Glenluce.

Fragment of Sandstone Slab, measuring 11 inches in length by 9 inches in breadth, and not exceeding 2 inches in thickness, having a rudely incised Maltese cross on one face, from the site of Chapel Donnan, Kirkcolm, Wigtownshire.

(5) By JOHN M'MEEKIN, Knockneen, Kirkcolm, through Rev. GEORGE WILSON, Glenluce, Corr. Mem. S.A. Scot.

Quadrangular Block of Sandstone, 10 inches in length, 5 inches in breadth, and 3 inches in thickness, having a faintly incised Maltese cross on each of its broad faces, from the neighbourhood of Chapel Donnan, Kirkcolm. Both this and the stone previously noticed from Chapel Donnan may probably have been boundary marks.

Three Spindle Whorls, viz. (1) of sandstone, $1\frac{3}{8}$ inch, ornamented

on one face with two incised circles concentric with the spindle-hole; (2) of grey shale, $1\frac{1}{4}$ inch in diameter, similarly ornamented with three slightly incised circles; (3) of steatite, $1\frac{1}{8}$ inch in diameter, plain, with rounded edges.

Socket-Stone, an oval pebble of quartzite, $3\frac{1}{2}$ inches in length by $2\frac{1}{2}$ inches in breadth, with hollows worn to the depth of $\frac{3}{4}$ inch by the revolutions of a vertical iron spindle.

(6) By Rev. GEORGE WILSON, Glenluce, Corr. Mem. S.A. Scot.

Two Upper Quern Stones of granite, from Barlockhart Loch, Glenluce (one broken).

Grinding or Polishing Stone, from Barlockhart Loch.

Rubbing Stone of grey granite, from Machermore, Glenluce.

Grinding Stone, being half of an oval pebble with hollows, from Mid Torrs, Glenluce.

(7) By JAMES M. STRACHAN, M.A., St Andrews.

Bronze Spear-head and Gouge, found at Torran, near Ford, Loch Awe, [See the previous communication by Mr Strachan, vol. xviii. p. 207.]

(8) By EUSTACE BALFOUR, Esq., through Dr ARTHUR MITCHELL, Vice-President.

Circular Cake of Adipose, found in a meadow on the bank of the Conon, Strathconon, Ross-shire.

(9) By the SENATUS OF THE UNIVERSITY OF EDINBURGH.

Medal in Bronze of the Tercentenary of the University of Edinburgh.

(10) By JAMES CRUIKSHANK ROGER, F.S.A. Scot., the Author.

Celticism a Myth. 8vo, 89 pp. London, 1884.

(11) By Rev. J. COLLINGWOOD BRUCE, LL.D., Hon. Mem. S.A. Scot., the Author.

The Three Bridges—Roman, Mediæval, and Modern—over the Tyne at Newcastle. 4to. Reprinted from *Archæologia Æliana*.

(12) By Professor GEORGE STEPHENS, LL.D., Hon. Mem. S.A. Scot.,
Copenhagen, the Author.

The Old Northern Runic Monuments of Scandinavia and England.
Part III., folio. Copenhagen, 1884.

The following Communications were read :—