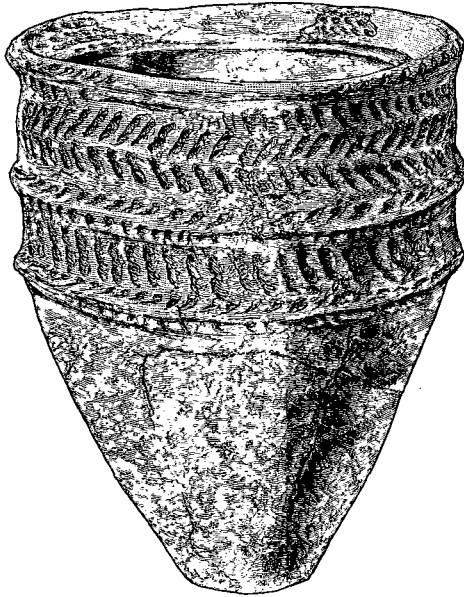


The following Communications were read :—

I.

NOTICE OF THE DISCOVERY OF A SEPULCHRAL URN AT BIRSELEY,  
PARISH OF TRANENT, NOW PRESENTED TO THE MUSEUM. By  
REV. JOHN STRUTHERS, LL. D., F.S.A. Scot.

The accompanying pieces of an ancient Sepulchral Urn were found in the course of tiring a quarry belonging to Mr John Wilson of Tranent a few hundred yards eastward of the old house of Birseley, to the south of



Urn found at Birseley, near Prestonpans (14 inches high).

the railway station for Prestonpans. The urn was entire when discovered by the workmen, about 18 inches below the surface, but fell to pieces

when somewhat rudely handled in the search for something valuable amid the charred bones that it contained.

In the near neighbourhood, that is within 3 or 4 yards of the place where the urn was found, and about 2 feet below the surface, there was also discovered a stone cist of the usual construction,—composed of four or five large slabs, such as are common in the fields around ; set on edge about a foot and a half apart, with similar flat stones covering the same, and at each end ; and containing a mass of darkish earth, but no relics or implements of any description.

The site of these deposits is to the south of the public road from Musselburgh to Tranent, and commands a full view of the Firth of Forth, such as may be presumed to have attracted the admiration of even the earliest settlers on its shores, if not also to have been in near proximity to one of their favourite camping grounds. Within a quarter of a mile of the same place the Roman medicine stamp, described by the late Sir James Simpson, was found above thirty years ago.

The pieces of the urn have now been put together, and its form and ornamentation are well shown in the foregoing woodcut.