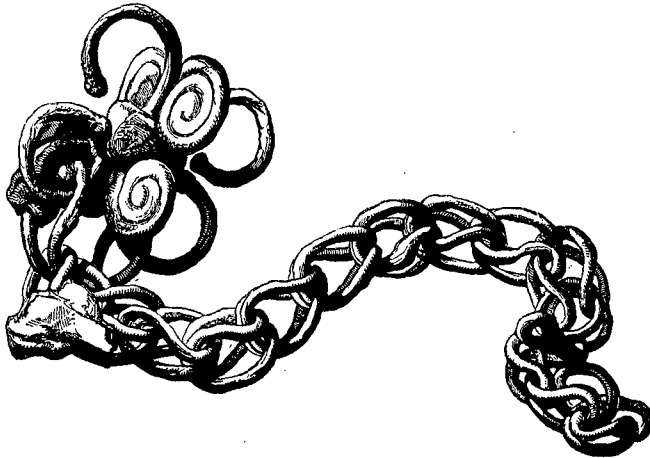


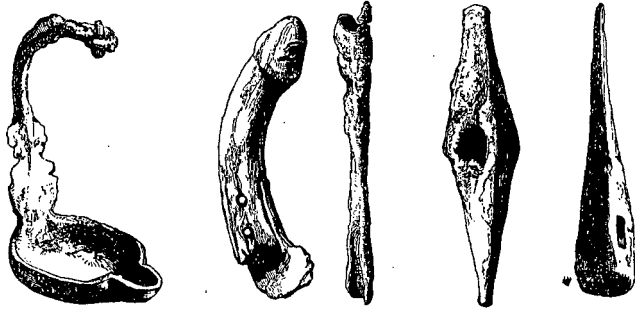
DISCOVERY OF BRONZE VESSELS, &c., AT COCKBURNSPATH,
BERWICKSHIRE.

These objects were discovered in a haugh adjoining the Water of Eye, at a depth of about 15 inches below the surface, lying on blue clay, below the peat, by two labourers in cutting a drain. They included two large vessels of extremely thin sheet bronze, apparently with traces of gilding externally, and measuring the one about 21 inches in diameter and 10 inches in depth, and the other 13 inches in diameter and $7\frac{1}{2}$ inches in depth. When found, these vessels were entire, and the one appeared to have been inverted on the other, with the articles within them. The larger one has obviously been much exposed to the fire, and repeatedly repaired; the smaller one has had handles fastened to it on opposite sides by three rivets, the holes for which remain, and it has probably also been strengthened by a rim of iron, without which it would collapse, from the extreme thinness of the metal, if lifted full of water. It is probable that the whole were contained in a large wooden pail; as there are two large rings with staples and nails, the latter of which are bent in, indicating the thickness of the staves to have been about $\frac{3}{4}$ of an inch. The rings measure $4\frac{1}{2}$ inches in diameter.



There are also a number of iron hoops broken and crushed together, but which there can be little doubt encircled the wooden pail.

The objects inclosed, included a Bronze Roman Patella of the usual form, $6\frac{3}{4}$ inches in diameter, and with the bottom composed of concentric rings in bold relief, but wanting the handle; the large Iron Chain figured above, measuring 27 inches in length; a Circular Bronze Ornament, apparently the shield to which the handle of some object has been attached, measuring nearly 3 inches in diameter; an Iron Lamp-Stand similar to examples frequently found on Roman



sites; two Iron Knives, one of them with a wooden handle; an Iron Gouge; two Iron Hammers, the one $7\frac{1}{4}$ inches in length, and the other $6\frac{1}{2}$ inches in length, most of which are figured here; apparently an Iron Tankard or Jug, crushed flat; two Ornamented Ends of Pipes, like the Mouth-Pieces of a Trumpet, of bright yellow bronze, and a mass of the same metal, weighing nearly $1\frac{1}{2}$ lb.

Owing to the care of Mr James Miller, the intelligent farmer of Blackburn Mill, the whole of the antiquities found were recovered and sent to Edinburgh, though not without considerable difficulty; the Patella, and some other articles having been carried off by the original finders under the usual impression that they were gold.