

SUPPLEMENTARY MATERIAL

Regime change in 13th-century western Scotland: a reconsideration of the architectural form and early history of the royal castle at Tarbert, Argyll

Mark Thacker¹

DOI: <https://doi.org/10.9750/PSAS.151.1348>

Photographic Record



¹ University of Stirling, 27 Upper Carloway, Isle of Lewis mark.thacker@stir.ac.uk <https://orcid.org/0000-0002-9096-3665>



ILLUS S1 Straight Joint 1 from the south-west; highlighting that the SW face of the cross-wall (and associated core rubble) abuts the internal face of SE curtain wall. Scale 1m/200mm.



ILLUS S2 Straight Joint 1 from above; highlighting that the cross-wall south-west face and core rubble (bottom of image) abuts the internal face of SE curtain wall (top of image). Scale 1m/200mm.



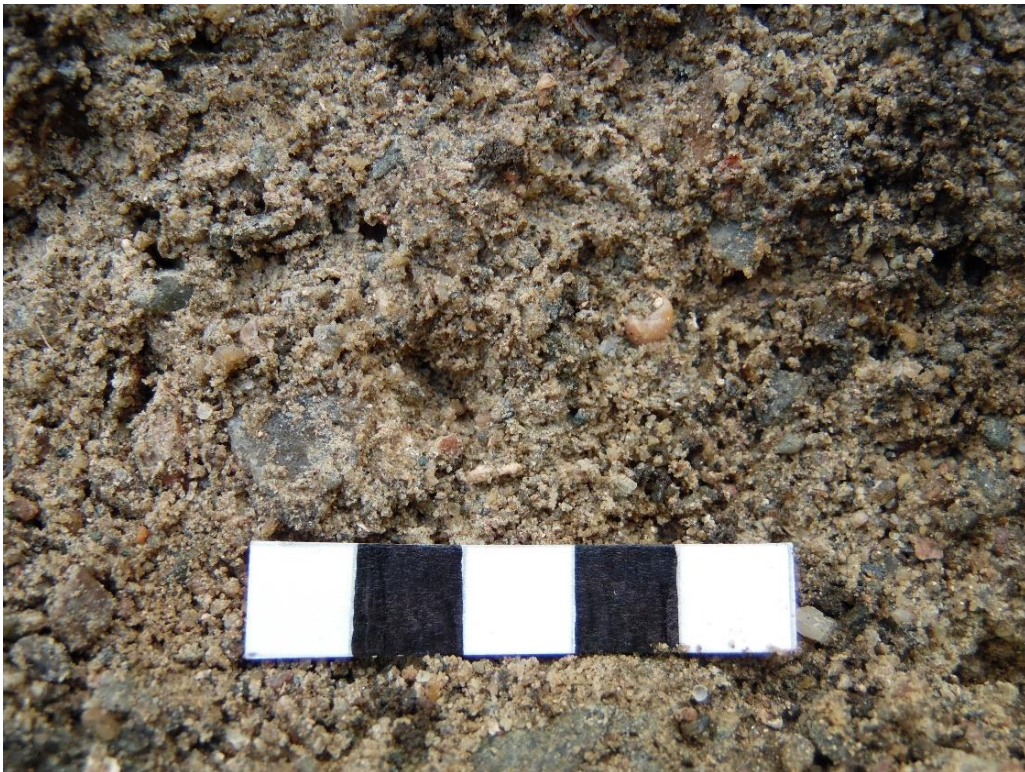
ILLUS S3 External face of SE curtain wall, inner bailey, surviving here to 1.0m above current ground level. Scale 1m/200mm.



ILLUS S4 Trench 1 of the community excavation, in the south angle of the outer bailey. Scale 2m/200mm.



ILLUS S5 Internal Face of SE curtain wall in Trench 1. Note rubble coursing and large slab face blocks. Scale 2m/200mm.



ILLUS S6 Bedding mortar of SE curtain wall. Scale 10mm.



ILLUS S7 Straight Joint 2, from the north-east. This feature aligns with the internal face of the inner bailey north-west curtain wall.



ILLUS S8 & S9 Straight Joint 2 from the north-east (left) and from above (right). The cross-wall clearly abuts the internal face of the inner bailey NW curtain wall, and this has aided its survival. Scales 300/100mm.



ILLUS S10 Straight Joint 2 from the north-east. The ranging rods delineate the width of the north-west wall of the inner bailey to the SW. Scales 2 x 1m/200mm.



ILLUS S11 Fragmentary and friable remains of bedding mortar in the north-west inner bailey curtain wall at Straight Joint 2. Scale 10mm.



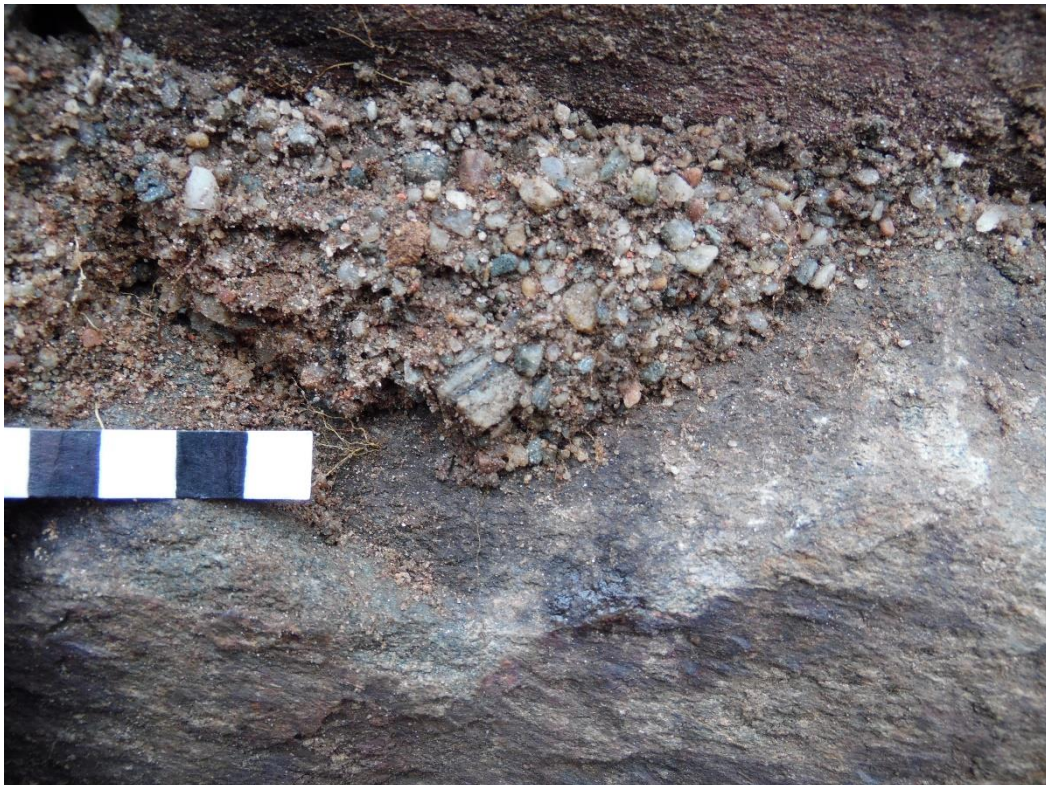
ILLUS S12 NW reveal of the outer bailey SW gate revealed by excavation. Note the dressed red sandstone external block with chamfered ariss and probable portcullis slot. Scales 2 x 1m/200mm.



ILLUS S13 Core mortar associated with excavated outer bailey SW gate wall. Scale 10mm.



ILLUS S14 External face of excavated west tower SW wall. Scale 2m/200mm.



ILLUS S15 Dissolute mortar coating on the external face of west tower SW wall, exposed in trench 4. Scale 10mm.



ILLUS S16 The cross-wall dividing the inner and outer baileys from the east.



ILLUS S17 NW end of the cross-wall, highlighting extensive volumes of exposed upstanding core rubble and some wall facing. Scale 2m/500mm.



ILLUS S18 Highlighting that the core mortar associated with cross-wall abuts the fossilised internal face of the inner bailey NW curtain wall at Straight Joint 2. Scale 300/100mm.



ILLUS S19 North-east face of cross-wall close to the south angle of the outer bailey. Scale 2m/200mm.



ILLUS S20 Straight Joint 1; highlighting that the cross-wall overbuilds the foundation scarcement and abuts the internal face of SE curtain wall. Scale 300/100mm.



ILLUS S21 Mortar at face of crosswall exposed by excavation, partially obscured by soil. Scale 10mm.



ILLUS S22 Part of inner bailey NE range exposed from the south-east in trench 2. Scale 2m/200mm.



ILLUS S23 Intramural opening (probable doorway) in the SW wall of the inner bailey NE Range from the north-east. Scale 2m/200mm.

ESM TABLE S1 – Summary of Sample Codes, Materials and Masonry Contexts

Sample Code	Sample Type	Building Feature	Feature Code	Masonry Context
TCA.01	Mortar	Curtain Wall	[047]	Wall Face Bedding
TCA.02	Mortar	Cross-wall	[046]	Wall Face Bed/coat
TCA.03	Mortar	NE Range	[044]	Wall Face Bed/coat
TCA.04	Mortar	NE Range	[035]	Floor
TCA.05	Mortar	Curtain Wall	[043]	Wall Core
TCA.06	Mortar	West Block	[054]	Wall Face Bed/coat
TCA.07	Mortar	Cross-wall	[051]	Wall core
TCA.08	Mortar	Curtain Wall	[050]	Wall Face Bedding
TCA.A	MERLF	Curtain wall	[047]	Wall face bedding
TCA.B	MERLF	Curtain wall	[047]	Wall face bedding
TCA.C	MERLF	Curtain wall	[047]	Wall face bed/coat
TCA.D	MERLF	Cross-wall	[046]	Wall face bed/coat
TCA.E	MERLF	Cross-wall	[046]	Wall face bed/coat
TCA.F	MERLF	Cross-wall	[046]	Wall face bedding
TCA.G	MERLF	NW range	[044]	Wall face bed/coat
TCA.H	MERLF	NW range	[044]	Wall face bed/coat
TCA.I	MERLF	Curtain wall	[043]	Wall core
TCA.K	MERLF?	West block	[042]	Wall face bedding
TCA.L	MERLF	Curtain wall	[050]	Wall face bedding
TCA.M	MERLF	Cross-wall	[051]	Wall core
TCA.J	Sandstone	Curtain wall	[043]	Wall core
TCA.X	Limestone?	NW range	[052]	Wall core (ex-situ)



ILLUS S24 Locations of samples removed from exposed outer bailey SE curtain wall [047]; Trench 1.



ILLUS S25 Locations of samples removed from exposed cross-wall [046]; Trench 1.



ILLUS S26 Locations of samples removed from exposed inner bailey NE range SW wall [044] and floor [035], Trench 2.



ILLUS S27 Locations of samples removed from the Outer Enclosure Gateway in SE Curtain Wall [043], revealed by Trench 3.



ILLUS S28 Location of the sample removed from West Block Wall [042], revealed in Trench 4.



ILLUS S29 Location of the sample removed from West Block Wall [054], revealed in Trench 4.



ILLUS S30 Locations of the samples removed from Abutment B.

Datum Levels 1-5



ILLUS S31 Datum 1; Wall [047].



ILLUS S32 Datum 2; Wall [045].



ILLUS S33 Datum 3; Wall [043].



ILLUS S34 Datum 4; Wall [042].



ILLUS S35 Datum 5; Wall [051].