

7. CARVED LINTEL, PROBABLY EIGHTEENTH CENTURY, FROM KINGHORN, FIFE

DURING demolitions of a house at 40 High St., Kinghorn, 1962, two portions of a carved stone were uncovered. These had been used as bordering stones for a path in the back garden, and were partly buried.

Set in the original position the two fragments show that the complete stone was semi-circular in shape, measuring at base 3 ft. 4 in. and at its highest points 2 ft. 2 in. It is of grey sandstone, $7\frac{1}{4}$ in. thick.

The arc of the stone is bordered with an egg-and-dart design, 3 in. broad, and the upper part shows a scale. On the left is a barrel with a large leaf coming from its open end, and on its right is a jar, the base of which is missing by subsequent damage. The right hand portion of stone shows a hand holding a tallow dip from which nine dips are suspended.

The carved stone was probably intended as a lintel to a candle-maker's premises. Candle-making was once a common industry at Kinghorn. The sharp definition of the carvings, however, indicate that the stone was never erected, and was broken when near completion.

At present the stone remains at the yard of the Burgh Engineer of Kinghorn.

WILLIAM HOOD

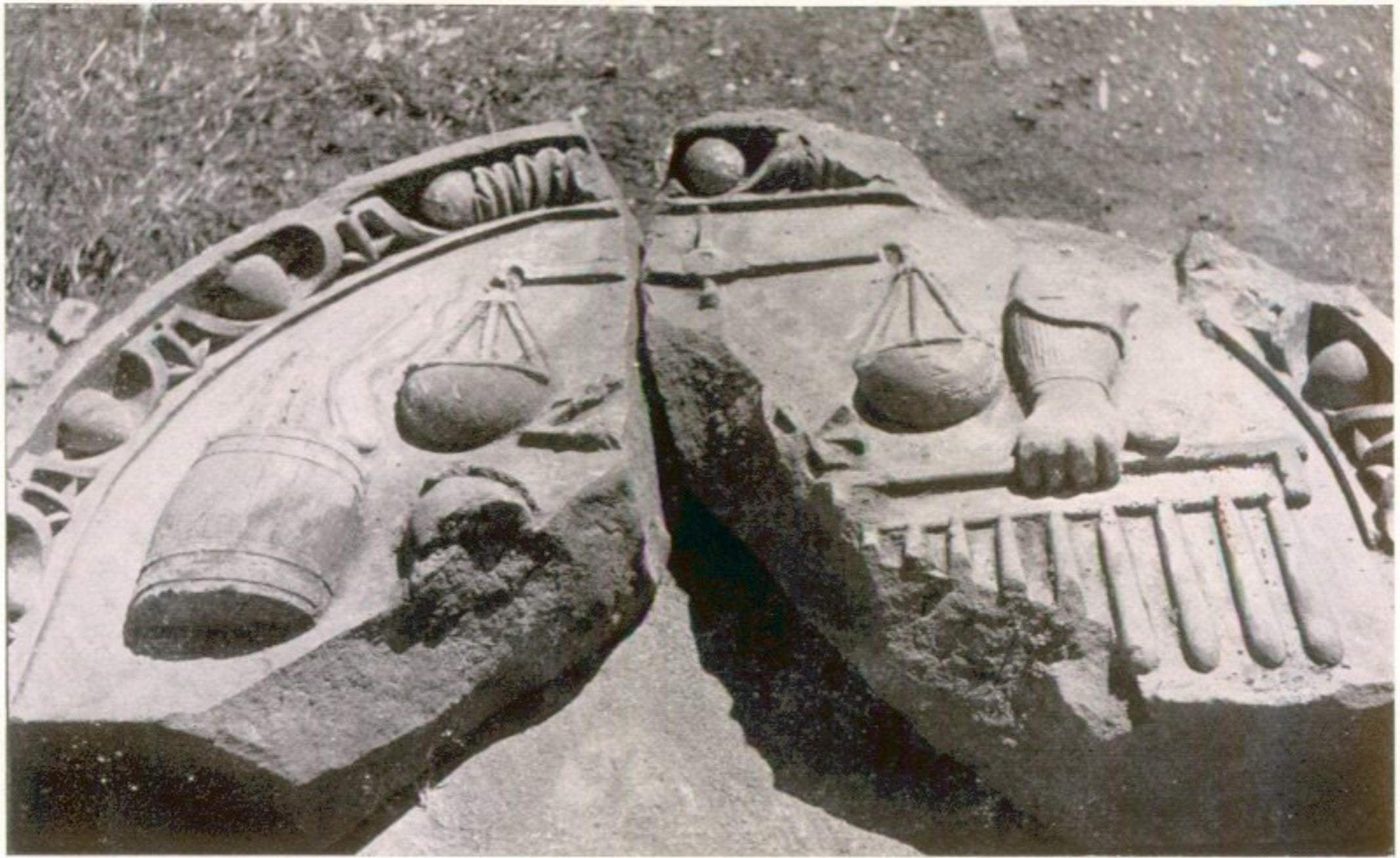


Photo. Dr Weir, Kinghorn

Carved lintel, probably eighteenth century, from Kinghorn, Fife

HOOD: CARVED LINTEL